

Gimsilumab reference antibody



Catalog Number: 176837

Product name

Gimsilumab reference antibody

Specificity

Human CSF2 / GM-CSF

Antibody description

Anti-CSF2 / GM-CSF Antibody (Gimsilumab)

Preparation

Recombinant expression and purified from CHO cells.

Formulation

0.1 M Glycine, 0.2 NaCl, 50 mM Tris-HCl, pH 6.0

Storage

-80°C for 2 years under sterile conditions; -20°C for 1 year under sterile conditions; Avoid repeated freeze-thaw cycles.

Clonality

Monoclonal

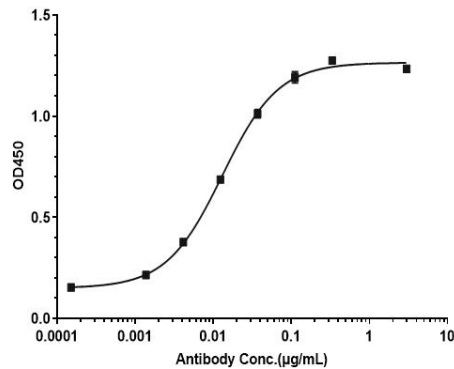
Ig Type

IgG1

Applications

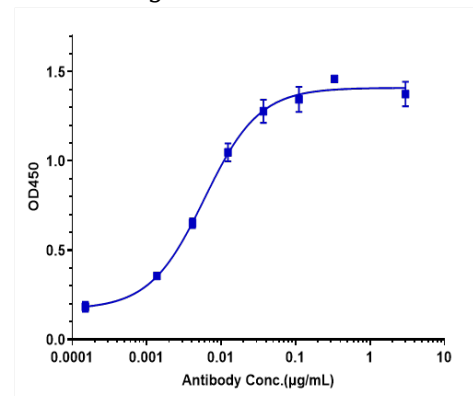
ELISA

Validations



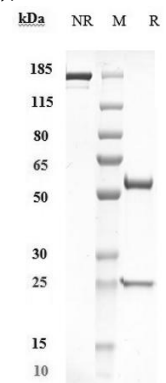
ELISA

Immobilized Human CSF2 / GM-CSF, His Tag at 2 µg/mL can bind Anti-CSF2 / GM-CSF Antibody (gimsilumab), The EC50 was approximately 0.01304 µg/mL.



ELISA

Immobilized Cynomolgus / Rhesus Macaque CSF2 / GM-CSF, His Tag at 2 µg/mL can bind Anti-CSF2 / GM-CSF Antibody (gimsilumab), The EC50 was



approximately 0.005958 µg/mL.

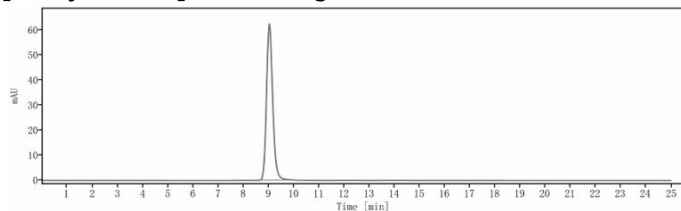
SDS-PAGE

Gimsilumab reference antibody



Catalog Number: 176837

Anti-CSF2 / GM-CSF Antibody (gimsilumab) on SDS-PAGE under reducing (R) condition. The purity of the protein is greater than 95%.



SEC-HPLC

The purity of Anti-CSF2 / GM-CSF Antibody (gimsilumab) is more than 95%, determined by SEC-HPLC.