

SUMO2/3 antibody



Catalog Number: 115837

Product name

SUMO2/3 antibody

IHC: 1:20-1:200

IF: 1:20-1:200

Specificity

Human, Mouse, Rat; other species not tested.

Antibody description

SUMO2/3 Rabbit Polyclonal antibody. Positive IF detected in HEK-293 cells. Positive IHC detected in human colon cancer tissue. Positive WB detected in HEK-293 cells, A549 cells, Jurkat cells, Recombinant protein. Observed molecular weight by Western-blot: 18-20 kDa

Preparation

This antibody was obtained by immunization of SUMO2/3 recombinant protein (Accession Number: NM_006937). Purification method: Antigen affinity purified.

Formulation

PBS with 0.1% sodium azide and 50% glycerol pH 7.3.

Storage

Store at -20°C. DO NOT ALIQUOT

Clonality

Polyclonal

Ig Type

Rabbit IgG

Applications

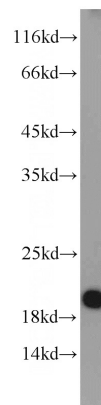
ELISA, WB, IHC, IF

Dilutions

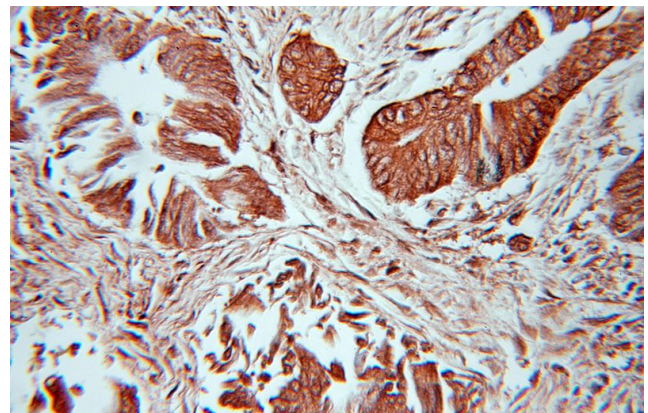
Recommended Dilution:

WB: 1:500-1:5000

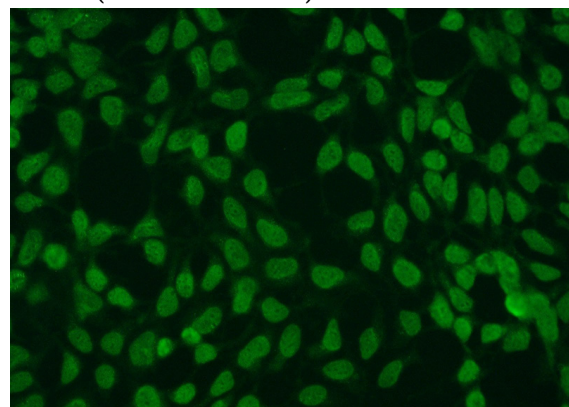
Validations



HEK-293 cells were subjected to SDS PAGE followed by western blot with Catalog No:115837(SUMO2/3 antibody) at dilution of 1:1000



Immunohistochemical of paraffin-embedded human colon cancer using Catalog No:115837(SUMO2/3 antibody) at dilution of 1:100 (under 10x lens)



SUMO2/3 antibody



Catalog Number: 115837

Immunofluorescent analysis of HEK-293 cells
using Catalog No:115837(SUMO2/3 Antibody) at

dilution of 1:50 and Alexa Fluor 488-conjugated
AffiniPure Goat Anti-Rabbit IgG(H+L)