

# RPS26 antibody

Catalog Number: 114837

## Product name

RPS26 antibody

WB: 1:500-1:5000

IP: 1:200-1:2000

## Specificity

Human, Mouse, Rat; other species not tested.

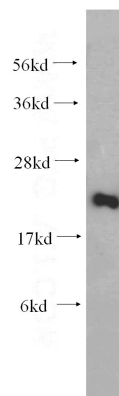
IHC: 1:20-1:200

IF: 1:20-1:200

## Antibody description

RPS26 Rabbit Polyclonal antibody. Positive IP detected in mouse lung tissue. Positive WB detected in mouse ovary tissue, mouse lung tissue. Positive IHC detected in human breast cancer tissue, human kidney tissue. Positive IF detected in MCF-7 cells. Observed molecular weight by Western-blot: 18-21kd

## Validations



## Preparation

This antibody was obtained by immunization of RPS26 recombinant protein (Accession Number: NM\_001029). Purification method: Antigen affinity purified.

mouse ovary tissue were subjected to SDS PAGE followed by western blot with Catalog No:114837(RPS26 antibody) at dilution of 1:200

## Formulation

PBS with 0.02% sodium azide and 50% glycerol pH 7.3.

## Storage

Store at -20°C. DO NOT ALIQUOT

## Clonality

Polyclonal

## Ig Type

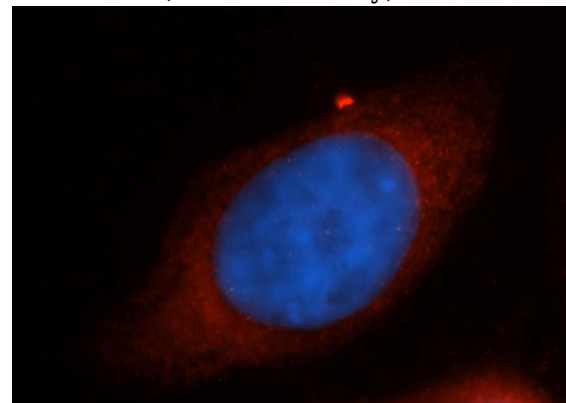
Rabbit IgG

## Applications

ELISA, WB, IF, IHC, IP

## Dilutions

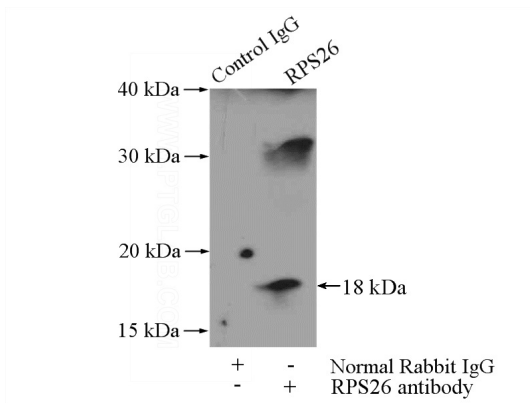
Recommended Dilution:



Immunofluorescent analysis of MCF-7 cells, using RPS26 antibody Catalog No:114837 at 1:50 dilution and Rhodamine-labeled goat anti-rabbit IgG (red). Blue pseudocolor = DAPI (fluorescent

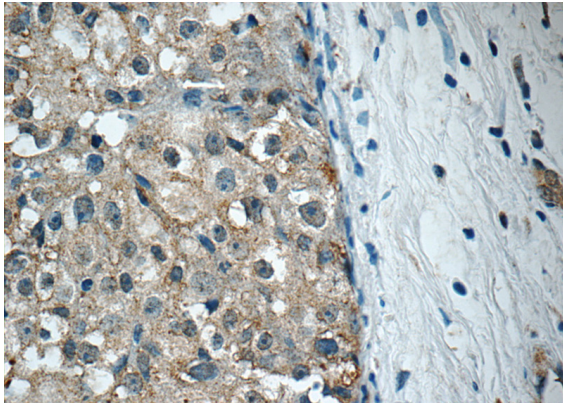
# RPS26 antibody

Catalog Number: 114837

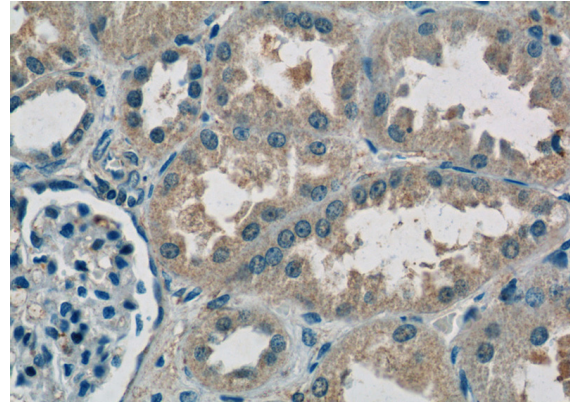


DNA dye).

IP Result of anti-RPS26 (IP:Catalog No:114837, 4ug; Detection:Catalog No:114837 1:500) with mouse lung tissue lysate 4000ug.



Immunohistochemistry of paraffin-embedded human breast cancer tissue slide using Catalog No:114837(RPS26 Antibody) at dilution of 1:50 (under 40x lens)



Immunohistochemistry of paraffin-embedded human kidney tissue slide using Catalog No:114837(RPS26 Antibody) at dilution of 1:50 (under 40x lens)