

# PITPNB antibody



Catalog Number: 113837

## Product name

PITPNB antibody

## Specificity

human, mouse, rat; other species not tested.

## Antibody description

PITPNB Rabbit Polyclonal antibody. Positive WB detected in mouse lung tissue, HeLa cells, K-562 cells, Raji cells. Positive IHC detected in human prostate cancer. Observed molecular weight by Western-blot: 32kd

## Preparation

This antibody was obtained by immunization of PITPNB recombinant protein (Accession Number: NM\_001284277). Purification method: Antigen affinity purified.

## Formulation

PBS with 0.1% sodium azide and 50% glycerol pH 7.3.

## Storage

Store at -20°C. DO NOT ALIQUOT

## Clonality

Polyclonal

## Ig Type

Rabbit IgG

## Applications

ELISA, WB, IHC

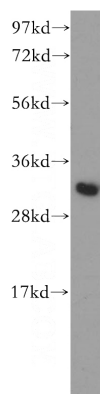
## Dilutions

Recommended Dilution:

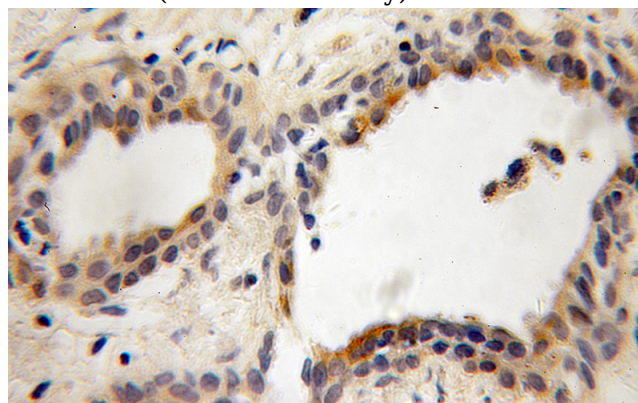
WB: 1:500-1:5000

IHC: 1:20-1:200

## Validations



mouse lung tissue were subjected to SDS PAGE followed by western blot with Catalog No:113837(PITPNB antibody) at dilution of 1:500



Immunohistochemical of paraffin-embedded human prostate cancer using Catalog No:113837(PITPNB antibody) at dilution of 1:100 (under 10x lens)