

IRF5 antibody

Catalog Number: 111837

Product name

IRF5 antibody

Specificity

Human, Mouse, Rat; other species not tested.

Antibody description

IRF5 Rabbit Polyclonal antibody. Positive FC detected in HepG2 cells. Positive IHC detected in human breast cancer tissue. Positive IF detected in HepG2 cells. Positive WB detected in Jurkat cells, A549 cells, HeLa cells, human heart tissue, NIH/3T3 cells, SH-SY5Y cells. Positive IP detected in HeLa cells. Observed molecular weight by Western-blot: 47-50 kDa

Preparation

This antibody was obtained by immunization of IRF5 recombinant protein (Accession Number: XM_047420339). Purification method: Antigen affinity purified.

Formulation

PBS with 0.1% sodium azide and 50% glycerol pH 7.3.

Storage

Store at -20°C. DO NOT ALIQUOT

Clonality

Polyclonal

Ig Type

Rabbit IgG

Applications

ELISA, WB, IHC, IF, FC, IP

Dilutions

Recommended Dilution:

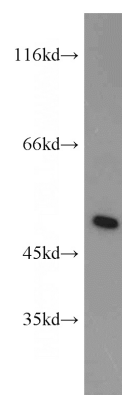
WB: 1:200-1:2000

IP: 1:200-1:1000

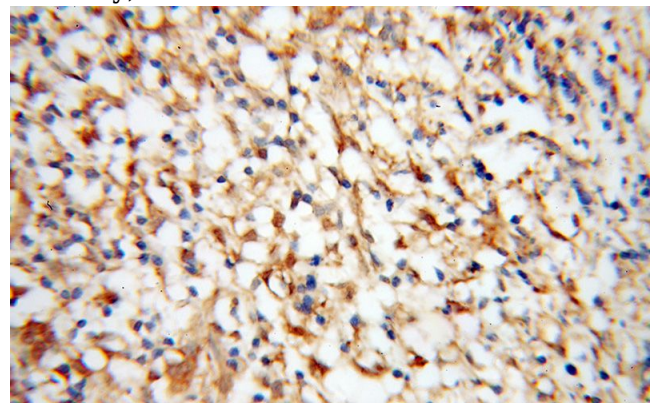
IHC: 1:20-1:200

IF: 1:10-1:100

Validations



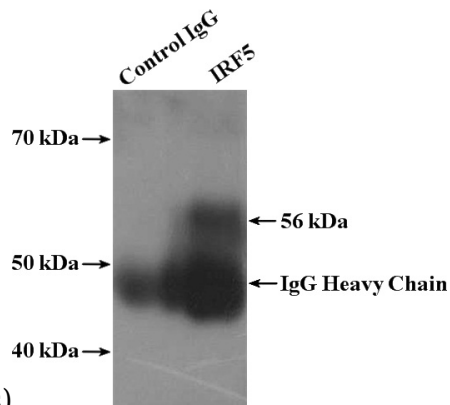
Jurkat cells were subjected to SDS PAGE followed by western blot with Catalog No:111837(IRF5 antibody) at dilution of 1:800



Immunohistochemical of paraffin-embedded human breast cancer using Catalog No:111837(IRF5 antibody) at dilution of 1:50

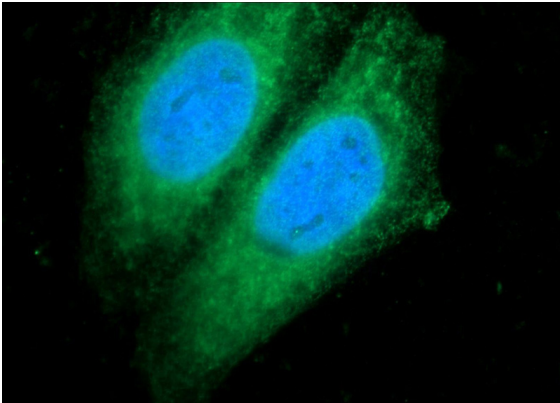
IRF5 antibody

Catalog Number: 111837

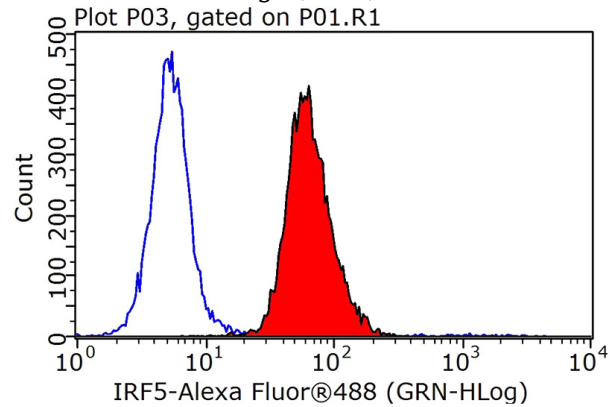


(under 40x lens)

IP Result of anti-IRF5 (IP:Catalog No:111837, 4ug;
Detection:Catalog No:111837 1:300) with HeLa
cells lysate 1600ug.



Immunofluorescent analysis of HepG2 cells using
Catalog No:111837(IRF5 Antibody) at dilution of
1:25 and Alexa Fluor 488-conjugated AffiniPure
Goat Anti-Rabbit IgG(H+L)



1×10^6 HepG2 cells were stained with 0.2ug
IRF5 antibody (Catalog No:111837, red) and
control antibody (blue). Fixed with 90% MeOH
blocked with 3% BSA (30 min). Alexa Fluor 488-
conjugated AffiniPure Goat Anti-Rabbit IgG(H+L)
with dilution 1:1000.