

SMC1A antibody



Catalog Number: 115437

Product name

SMC1A antibody

Specificity

Human, Mouse; other species not tested.

Antibody description

SMC1A Rabbit Polyclonal antibody. Positive WB detected in A431 cells, HeLa cells, K-562 cells, NIH/3T3 cells. Observed molecular weight by Western-blot: 143-150 kDa

Preparation

This antibody was obtained by immunization of SMC1A recombinant protein (Accession Number: NM_006306). Purification method: Antigen Affinity purified.

Formulation

PBS with 0.02% sodium azide and 50% glycerol pH 7.3.

Storage

Store at -20°C. DO NOT ALIQUOT

Clonality

Polyclonal

Ig Type

Rabbit IgG

Applications

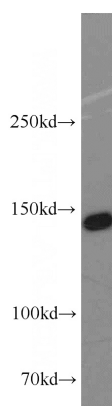
ELISA, WB

Dilutions

Recommended Dilution:

WB: 1:500-1:5000

Validations



A431 cells were subjected to SDS PAGE followed by western blot with Catalog No:115437(SMC1A antibody) at dilution of 1:1000