

# OSGEP antibody

Catalog Number: 113437

## Product name

OSGEP antibody

IHC: 1:20-1:200

IF: 1:10-1:100

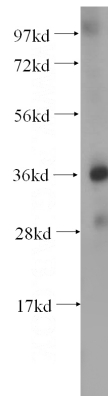
## Specificity

Human, Mouse, Rat; other species not tested.

## Antibody description

OSGEP Rabbit Polyclonal antibody. Positive WB detected in human heart tissue, PC-3 cells, Raji cells. Positive IF detected in HepG2 cells. Positive IHC detected in human pancreas cancer tissue, human heart tissue, human kidney tissue. Observed molecular weight by Western-blot: 36kd

## Validations



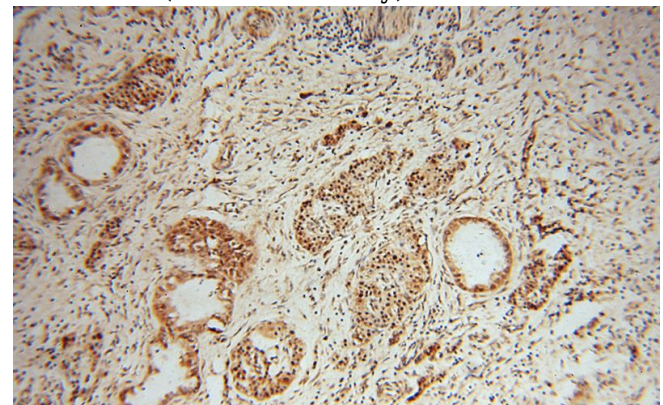
## Preparation

This antibody was obtained by immunization of OSGEP recombinant protein (Accession Number: NM\_017807). Purification method: Antigen affinity purified.

human heart tissue were subjected to SDS PAGE followed by western blot with Catalog No:113437(OSGEP antibody) at dilution of 1:500

## Formulation

PBS with 0.02% sodium azide and 50% glycerol pH 7.3.



## Storage

Store at -20°C. DO NOT ALIQUOT

## Clonality

Polyclonal

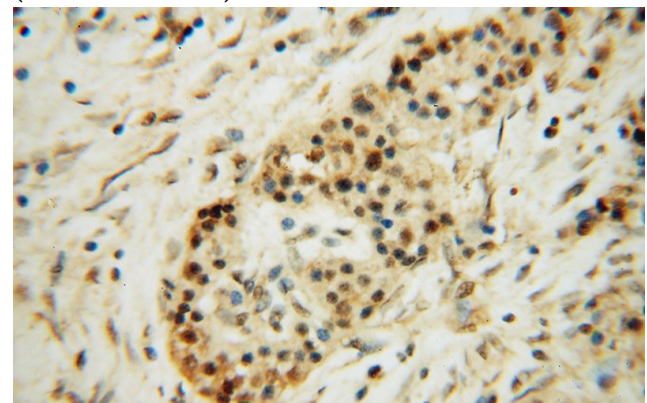
Immunohistochemical of paraffin-embedded human pancreas cancer using Catalog No:113437(OSGEP antibody) at dilution of 1:50 (under 10x lens)

## Ig Type

Rabbit IgG

## Applications

ELISA, WB, IHC, IF



## Dilutions

Recommended Dilution:

WB: 1:500-1:5000

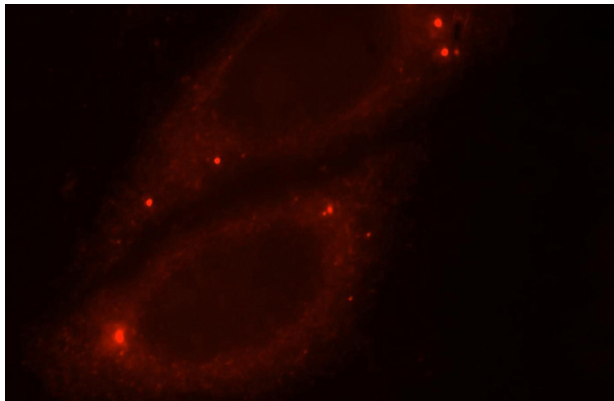
Immunohistochemical of paraffin-embedded

# OSGEP antibody

Catalog Number: 113437

---

human pancreas cancer using Catalog No:113437(OSGEP antibody) at dilution of 1:50 (under 40x lens)



Immunofluorescent analysis of HepG2 cells, using OSGEP antibody Catalog No:113437 at 1:25 dilution and Rhodamine-labeled goat anti-rabbit IgG (red).