

ZEB1 antibody

Catalog Number: 117037

Product name

ZEB1 antibody

Specificity

Human, Mouse, Rat; other species not tested.

Antibody description

ZEB1 Rabbit Polyclonal antibody. Positive IP detected in MCF-7 cells. Positive WB detected in MCF7 cells, HeLa cells, PC-3 cells. Observed molecular weight by Western-blot: 190-210 kDa

Preparation

This antibody was obtained by immunization of ZEB1 recombinant protein (Accession Number: NM_001174096). Purification method: Antigen affinity purified.

Formulation

PBS with 0.02% sodium azide and 50% glycerol pH 7.3.

Storage

Store at -20°C. DO NOT ALIQUOT

Clonality

Polyclonal

Ig Type

Rabbit IgG

Applications

ELISA, WB, IP

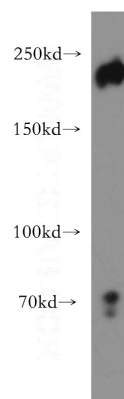
Dilutions

Recommended Dilution:

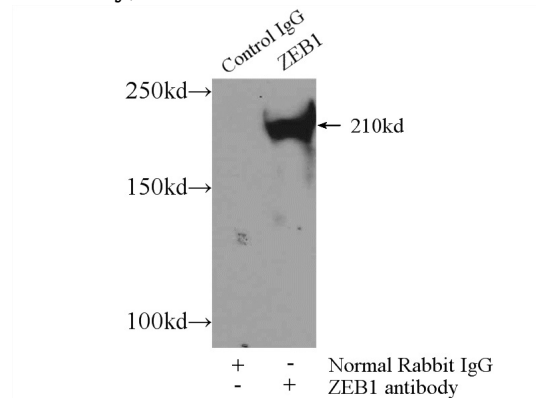
WB: 1:500-1:5000

IP: 1:200-1:2000

Validations



MCF7 cells were subjected to SDS PAGE followed by western blot with Catalog No:117037(ZEB1 antibody) at dilution of 1:500



IP Result of anti-ZEB1 (IP:Catalog No:117037, 4ug; Detection:Catalog No:117037 1:500) with MCF-7 cells lysate 4000ug.