

# Anti-Cyclin D1 Rabbit antibody



Catalog Number: 167037

## Product name

Anti-Cyclin D1 Rabbit antibody

ICC/IF: 1/50-1/100

IP: 1/50

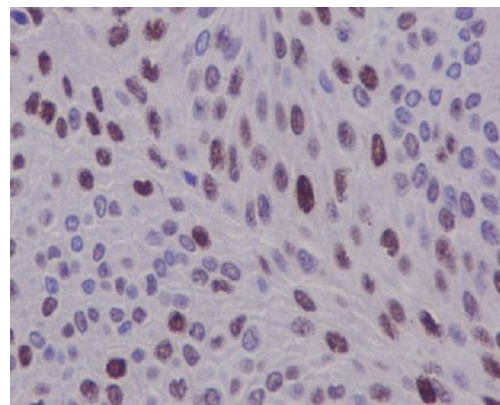
## Specificity

Human, Mouse, Rat

## Validations

## Antibody description

Cyclin D1 Rabbit polyclonal antibody



## Preparation

Antigen: A synthesized peptide derived from human Cyclin D1

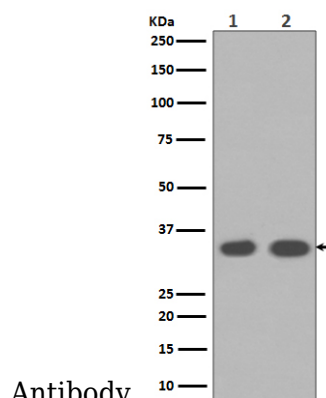
Immunohistochemical analysis of paraffin-embedded human bladder, using Cyclin D1

## Formulation

Rabbit IgG in phosphate buffered saline , pH 7.4, 150mM NaCl, 0.02% sodium azide and 50% glycerol.

## Storage

Store at 4°C short term. Store at -20°C long term. Avoid freeze / thaw cycle.



Antibody.

## Clonality

Polyclonal

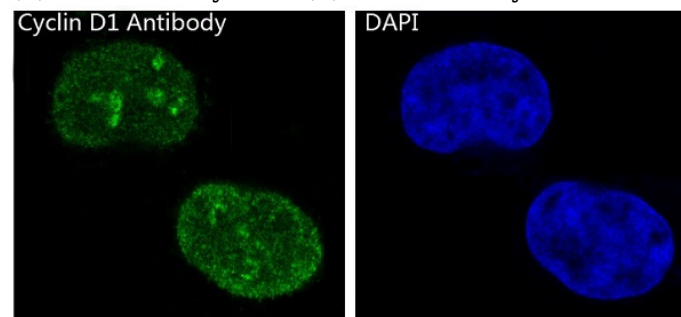
Western blot analysis of Cyclin D1 expression in (1)MCF-7 cell lysates;(2) LnCaP cell lysates.

## Ig Type

Rabbit IgG

## Applications

WB, IHC-P, ICC/IF, IP



## Dilutions

WB: 1/1000-1/5000

IHC: 1/50-1/200

Immunofluorescent analysis of MCF-7 cells, using Cyclin D1 Antibody .