

# Human LPAL2/APOARGC (Fc Tag) recombinant protein



Catalog Number: 501037

## General Information

### Gene Name Synonym

Apolipoprotein a-related gene C protein

### Protein Construction

A DNA sequence encoding the human LPAL2 (Q16609) (Met1-Ala132) was expressed with the Fc region of mouse IgG1 at the C-terminus.

### Organism

Human

### Expression Host

Human Cells

## QC Testing

### Purity

(46.4+37.2) % as determined by SDS-PAGE

### Endotoxin

< 1.0 EU per  $\mu\text{g}$  of the protein as determined by the LAL method

### Stability

Samples are stable for up to twelve months from date of receipt at  $-70^{\circ}\text{C}$

### Predicted N terminal

Gly 22

### Molecular Mass

The recombinant human LPAL2/mFc comprises 345 amino acids and has a predicted molecular mass of 38.9 kDa. The apparent molecular mass of the protein is approximately 48.2 and 42.7 kDa in SDS-PAGE under reducing conditions.

### Formulation

Lyophilized from sterile PBS, pH 7.4.

1. 5 % trehalose and mannitol are added as protectants before lyophilization.
2. Please contact us for any concerns or special requirements.

## Usage Guide

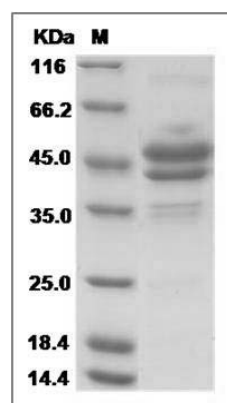
### Storage

Store it under sterile conditions at  $-20^{\circ}\text{C}$  to  $-80^{\circ}\text{C}$ . It is recommended that the protein be aliquoted for optimal storage. Avoid repeated freeze-thaw cycles.

### Reconstitution

Adding sterile water, prepare a stock solution of 0.25 mg/ml. Concentration is measured by UV-Vis.

### SDS-PAGE



Human LPAL2 Protein (Fc Tag) SDS-PAGE