

Anti-Pin1 Rabbit antibody



Catalog Number: 168727

Product name

Anti-Pin1 Rabbit antibody

Specificity

Human, Mouse, Rat

Antibody description

Pin1 Rabbit monoclonal antibody

Preparation

Antigen: Recombinant protein of mouse Pin1

Formulation

50nM Tris-Glycine(pH 7.4), 0.15M NaCl, 40%Glycerol, 0.01% sodium azide and 0.05% BSA.

Storage

Store at 4°C short term. Store at -20°C long term. Avoid freeze / thaw cycle.

Clonality

Monoclonal

Ig Type

Rabbit IgG

Applications

WB, IHC-P, ICC/IF, FC, IP

Dilutions

WB: 1/1000

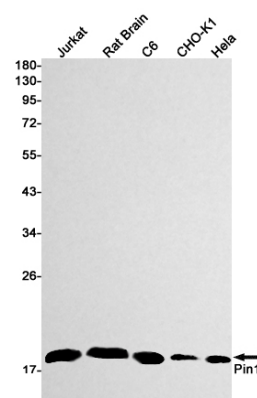
IHC: 1/20

ICC/IF: 1/20

FC: 1/100

IP: 1/20

Validations



Western blot detection of Pin1 in Jurkat,Rat Brain,C6,CHO-K1,Hela cell lysates using Pin1 Rabbit mAb(1:1000 diluted).Predicted band size:18kDa.Observed band size:18kDa.