

Monomethyl auristatin E (MMAE) Monoclonal Antibody



Catalog Number: 176727

Product name

Monomethyl auristatin E (MMAE) Monoclonal Antibody

Specificity

Chemical

Antibody description

Product has been tested in direct ELISA.

Preparation

MMAE conjugated with KLH. Protein G affinity purified

Formulation

PBS(pH7.4), lyophilized. **Reconstitution: Adding sterile water, prepare a stock solution of 2.0 mg/ml.**

Storage

Store at -20°C. Avoid freeze / thaw cycles.

Clonality

Monoclonal

Ig Type

Mouse IgG1, κ

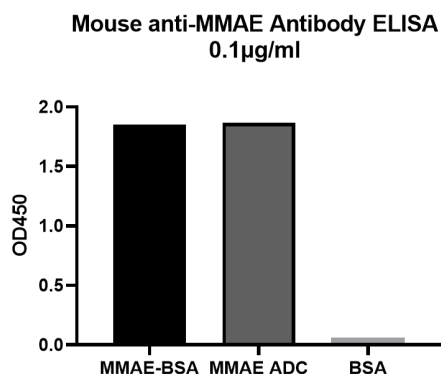
Applications

ELISA

Dilutions

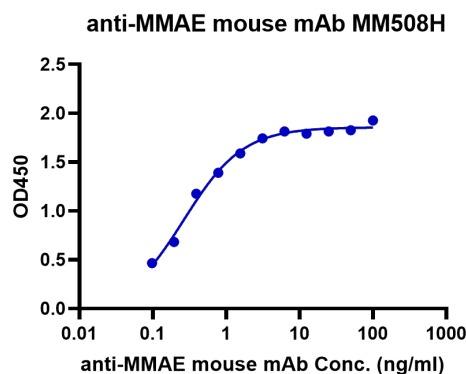
ELISA: 1:5,000-1:20,000

Validations



ELISA Binding Assay of Anti-MMAE Antibody to different proteins.

ELISA analysis of Anti-MMAE Monoclonal Antibody with MMAE-BSA, MMAE ADC and BSA. Anti-MMAE Monoclonal Antibody can bind to MMAE-BSA or MMAE ADC but not carrier protein.



ELISA Binding Assay of Anti-MMAE Antibody

Immobilized MMAE ADC at 2 μ g/mL (100 μ L/well) can bind anti-MMAE mouse monoclonal antibody.