

# Anti-CSR1 antibody



Catalog Number: 102727

## Product name

Anti-CSR1 antibody

## Immunogen

[Human CSR1 \(His Tag\) recombinant protein](#)

## Specificity

Human CSR1 / CRP1

## Antibody description

Rabbit polyclonal to CSR1

## Preparation

Produced in rabbits immunized with purified, recombinant Human CSR1 (rh CSR1; NP\_004069.1; Met 1-Glu 193). CSR1 specific IgG was purified by human CSR1 affinity chromatography

## Formulation

0.2 µm filtered solution in PBS with 5% trehalose

## Storage

This antibody can be stored at 2°C-8°C for one month without detectable loss of activity. Antibody products are stable for twelve months from date of receipt when stored at -20°C to -80°C.

Preservative-Free.

Sodium azide is recommended to avoid contamination (final concentration 0.05%-0.1%). It is toxic to cells and should be disposed of properly. Avoid repeated freeze-thaw cycles.

## Clonality

Polyclonal

## Ig Type

Rabbit IgG

## Applications

ELISA, WB, IP

## Dilutions

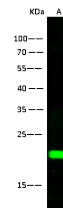
WB: 5-10 µg/mL

ELISA: 0.1-0.2 µg/mL

This antibody can be used at 0.1-0.2 µg/mL with the appropriate secondary reagents to detect Human CSR1. The detection limit for Human CSR1 is approximately 0.039 ng/well.

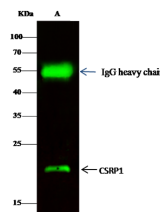
IP: 4-6 µg/mg of lysate

## Validations



Lanes	A
Items	
Sample (whole cell lysate)	HeLa
Sample Volume (µg/lane)	30
Gel	13% SDS-PAGE reducing gel
Recommended Concentration	5-10 µg/ml
Secondary Antibody	Dylight 800-labeled Antibody To Rabbit IgG (H+L), at 1:5000 dilution. Developed using Odyssey imaging system.
Explanation	Predicted band size : 21 kDa Observed band size : 21 kDa

CSR1 / CRP1 Antibody, Rabbit PAb, Antigen Affinity Purified, Western blot



Lanes	A
Items	
Sample (whole cell lysate)	HeLa
Sample quantity	0.5 mg
IP antibody quantity	2 µg
Protein G agarose	15 µl of 50% Protein G Agarose
Gel	13% SDS-PAGE reducing gel
Primary antibody	CSR1 antibody at 5 µg/ml
Secondary antibody	Dylight 800-labeled antibody to rabbit IgG (H+L), at 1:5000 dilution.

CSR1 / CRP1 Antibody, Rabbit PAb, Antigen Affinity Purified