

# CKAP2L antibody

Catalog Number: 109327

## Product name

CKAP2L antibody

## Specificity

Human; other species not tested.

## Antibody description

CKAP2L Rabbit Polyclonal antibody. Positive WB detected in Jurkat cells, K-562 cells. Positive IP detected in Jurkat cells. Observed molecular weight by Western-blot: 84 kDa

## Preparation

This antibody was obtained by immunization of CKAP2L recombinant protein (Accession Number: NM\_152515). Purification method: Antigen affinity purified.

## Formulation

PBS with 0.02% sodium azide and 50% glycerol pH 7.3.

## Storage

Store at -20°C. DO NOT ALIQUOT

## Clonality

Polyclonal

## Ig Type

Rabbit IgG

## Applications

ELISA, IP, WB

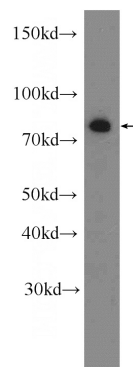
## Dilutions

Recommended Dilution:

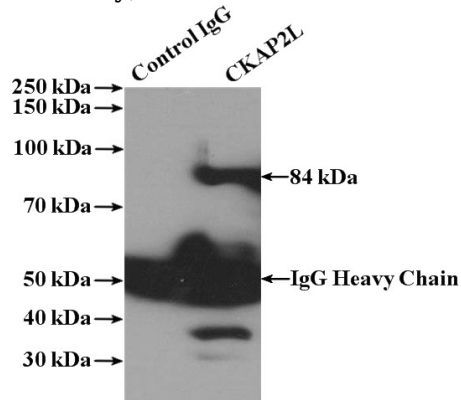
WB: 1:500-1:5000

IP: 1:500-1:5000

## Validations



Jurkat cells were subjected to SDS PAGE followed by western blot with Catalog No:109327(CKAP2L antibody) at dilution of 1:1000



IP Result of anti-CKAP2L (IP:Catalog No:109327, 4ug; Detection:Catalog No:109327 1:1000) with Jurkat cells lysate 2800ug.