

Anti-SYT10 antibody



Catalog Number: 176327

Product name

Anti-SYT10 antibody

Specificity

Human, Mouse, Rat

Antibody description

Rabbit polyclonal antibody to SYT10

Preparation

This antigen of this antibody was synthesized peptide derived from synaptotagmin x . at aa range: 380-460

Formulation

Liquid, Liquid in PBS containing 50% glycerol, 0.5% BSA and 0.02% sodium azide.

Storage

Store at +4°C after thawing. Aliquot store at -20°C or -80°C. Avoid repeated freeze / thaw cycles.

Clonality

Polyclonal

Ig Type

Rabbit IgG

Applications

WB

Dilutions

WB: 1:500-1:2000

Validations

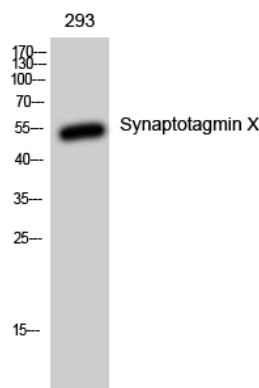


Fig1.; Western Blot analysis of 293 cells using Synaptotagmin X Polyclonal Antibody