

# Anti-CHI3L1 antibody



Catalog Number: 175327

## Product name

Anti-CHI3L1 antibody

## Specificity

Human, Mouse, Rat

## Antibody description

Rabbit polyclonal antibody to CHI3L1

## Preparation

This antigen of this antibody was klh conjugated synthetic peptide derived from human chi3l1 301-383/383

## Formulation

Liquid, 0.01M TBS(pH7.4) with 1% BSA, 0.03% Proclin300 and 50% Glycerol.

## Storage

Store at -20°C for one year. Avoid repeated freeze/thaw cycles. The lyophilized antibody is stable at room temperature for at least one month and for greater than a year when kept at -20°C. When reconstituted in sterile pH 7.4 0.01M PBS or diluent of antibody the antibody is stable for at least two weeks at 2-4°C.

## Clonality

Polyclonal

## Ig Type

Rabbit IgG

## Applications

WB, FC

## Dilutions

WB:1:500-2000

FC:1µg/Test

## Validations

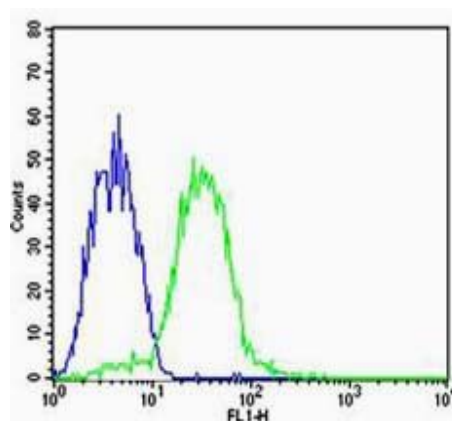
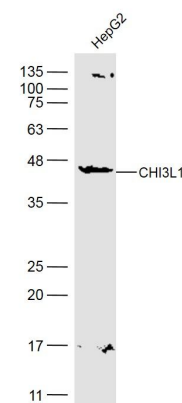


Fig1: Cell: HepG2; Concentration:1:100; Host/Isotype:Rabbit/IgG; Flow cytometric analysis of Rabbit IgG isotype control (Cat#: 175327#) on HepG2(green) compared with control in the absence of primary antibody (blue) followed by Alexa Fluor 488-conjugated goat anti-rabbit



IgG(H+L) secondary antibody .

Fig2: Sample:; HepG2(Human) Cell Lysate at 30 ug; Primary: Anti-CHI3L1 at 1/500 dilution; Secondary: IRDye800CW Goat Anti-Rabbit IgG at 1/20000 dilution; Predicted band size: 42 kD; Observed band size: 42 kD