

PTPRE antibody



Catalog Number: 114327

Product name

PTPRE antibody

Immunogen

[Human PTPRE Recombinant protein \(His tag\)](#)

Specificity

Human; other species not tested.

Antibody description

PTPRE Rabbit Polyclonal antibody. Positive WB detected in HL-60 cells. Positive IHC detected in human breast cancer tissue, human liver tissue. Observed molecular weight by Western-blot: 81 kDa

Preparation

This antibody was obtained by immunization of PTPRE recombinant protein (Accession Number: XM_005252691). Purification method: Antigen affinity purified.

Formulation

PBS with 0.02% sodium azide and 50% glycerol pH 7.3.

Storage

Store at -20°C. DO NOT ALIQUOT

Clonality

Polyclonal

Ig Type

Rabbit IgG

Applications

ELISA, WB, IHC

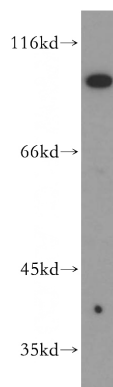
Dilutions

Recommended Dilution:

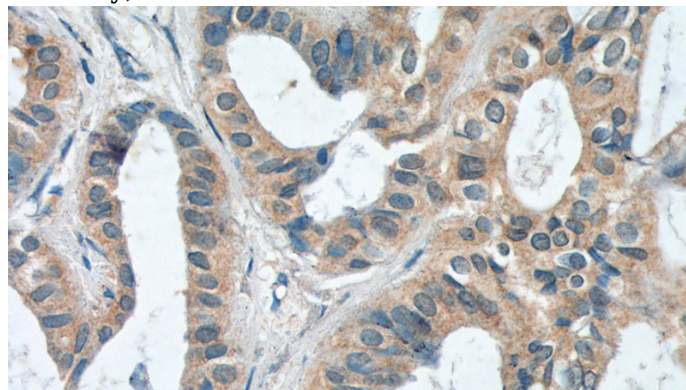
WB: 1:200-1:1000

IHC: 1:50-1:500

Validations



HL-60 cells were subjected to SDS PAGE followed by western blot with Catalog No:114327(PTPRE antibody) at dilution of 1:300



Immunohistochemistry of paraffin-embedded human breast cancer tissue slide using Catalog No:114327(PTPRE Antibody) at dilution of 1:200 (under 40x lens).