

# ENSA antibody

Catalog Number: 110327

## Product name

ENSA antibody

IHC: 1:20-1:200

IF: 1:50-1:500

## Specificity

Human, Mouse, Rat; other species not tested.

## Antibody description

ENSA Rabbit Polyclonal antibody. Positive WB detected in mouse brain tissue, HeLa cells. Positive IF detected in HeLa cells. Positive IHC detected in human small intestine tissue. Observed molecular weight by Western-blot: 19 kDa

## Preparation

This antibody was obtained by immunization of ENSA recombinant protein (Accession Number: NM\_004436). Purification method: Antigen affinity purified.

## Formulation

PBS with 0.1% sodium azide and 50% glycerol pH 7.3.

## Storage

Store at -20°C. DO NOT ALIQUOT

## Clonality

Polyclonal

## Ig Type

Rabbit IgG

## Applications

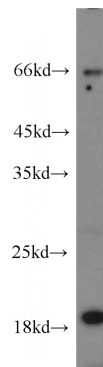
ELISA, WB, IHC, IF

## Dilutions

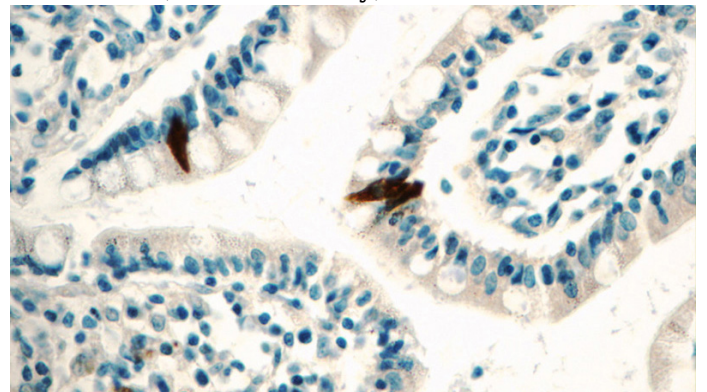
Recommended Dilution:

WB: 1:200-1:1000

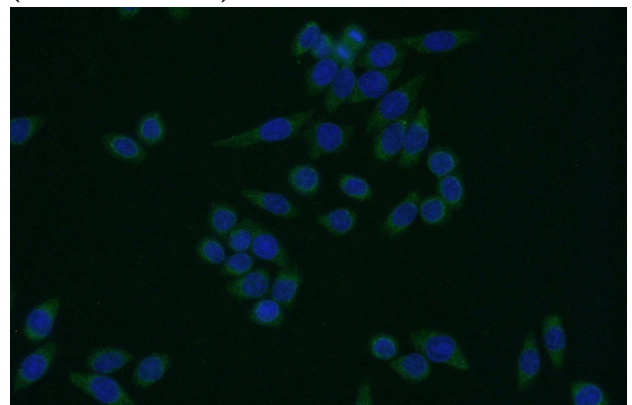
## Validations



mouse brain tissue were subjected to SDS PAGE followed by western blot with Catalog No:110327(ENSA antibody) at dilution of 1:300



Immunohistochemistry of paraffin-embedded human small intestine tissue slide using Catalog No:110327(ENSA Antibody) at dilution of 1:50 (under 40x lens)



Immunofluorescent analysis of (-20oc Ethanol)

# ENSA antibody



Catalog Number: 110327

---

fixed HeLa cells using Catalog No:110327(ENSA

Antibody) at dilution of 1:50 and Alexa Fluor 488-conjugated AffiniPure Goat Anti-Rabbit IgG(H+L)