

PI4K2A Polyclonal Antibody



Catalog Number: 165227

Product name

PI4K2A Polyclonal Antibody

Specificity

Human

Antibody description

Polyclonal antibody to PI4K2A

Preparation

Antigen: A synthetic peptide of human PI4K2A

Formulation

PBS with 0.02% sodium azide, pH7.3.

Storage

Store at 4°C. Avoid freeze / thaw cycles.

Clonality

Polyclonal

Ig Type

Rabbit IgG

Applications

WB, IHC, IF

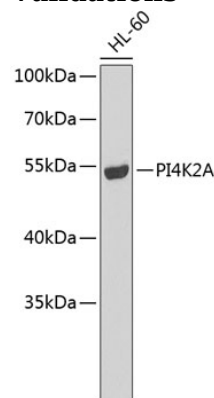
Dilutions

WB 1:500 - 1:1000

IHC 1:50 - 1:100

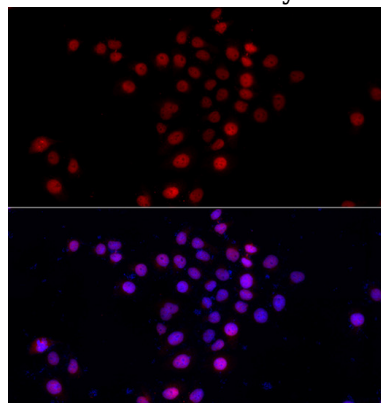
IF 1:20 - 1:100

Validations



Western blot - PI4K2A Polyclonal Antibody

Western blot analysis of extracts of HL-60 cells, using PI4K2A antibody. Secondary antibody: HRP Goat Anti-Rabbit IgG (H+L) at 1:10000 dilution. Lysates/proteins: 25ug per lane. Blocking buffer: 3% nonfat dry milk in TBST.



Immunofluorescence - PI4K2A Polyclonal Antibody

Immunofluorescence analysis of HeLa cells using PI4K2A antibody. Blue: DAPI for nuclear staining.