

LIMD2 antibody

Catalog Number: 112227

Product name

LIMD2 antibody

Specificity

human, mouse, rat; other species not tested.

Antibody description

LIMD2 Rabbit Polyclonal antibody. Positive WB detected in Raji cells, U-937 cells. Positive IHC detected in human liver cancer. Observed molecular weight by Western-blot: 14kd

Preparation

This antibody was obtained by immunization of LIMD2 recombinant protein (Accession Number: NM_030576). Purification method: Antigen affinity purified.

Formulation

PBS with 0.02% sodium azide and 50% glycerol pH 7.3.

Storage

Store at -20°C. DO NOT ALIQUOT

Clonality

Polyclonal

Ig Type

Rabbit IgG

Applications

ELISA, WB, IHC

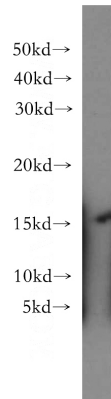
Dilutions

Recommended Dilution:

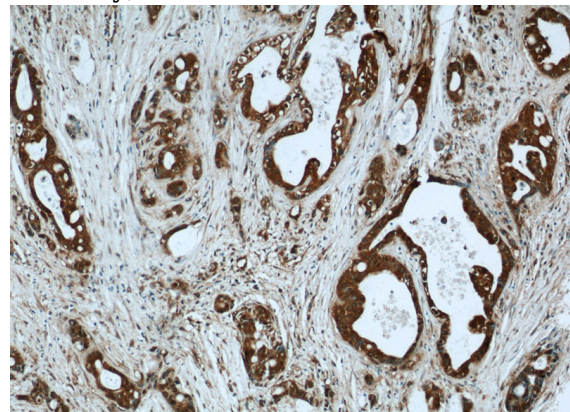
WB: 1:200-1:2000

IHC: 1:20-1:200

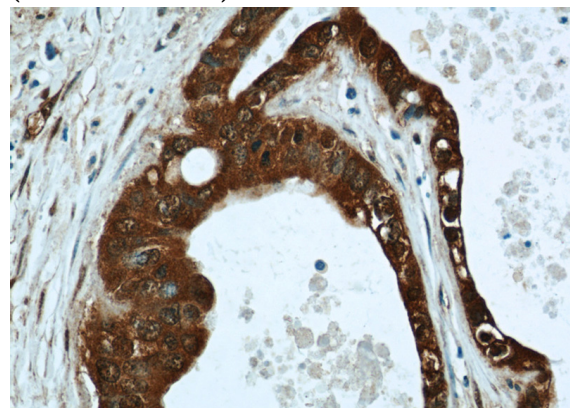
Validations



Raji cells were subjected to SDS PAGE followed by western blot with Catalog No:112227(LIMD2 antibody) at dilution of 1:300



Immunohistochemical of paraffin-embedded human liver cancer using Catalog No:112227(LIMD2 antibody) at dilution of 1:50 (under 10x lens)



Immunohistochemical of paraffin-embedded human liver cancer using Catalog No:112227(LIMD2 antibody) at dilution of 1:50 (under 40x lens)