

Anti-SF20 Rabbit antibody



Catalog Number: 167927

Product name

Anti-SF20 Rabbit antibody

Specificity

Human

Antibody description

SF20 Rabbit monoclonal antibody

Preparation

Antigen: Recombinant protein of human SF20

Formulation

50nM Tris-Glycine(pH 7.4), 0.15M NaCl, 40%Glycerol, 0.01% sodium azide and 0.05% BSA

Storage

Store at 4°C short term. Store at -20°C long term. Avoid freeze / thaw cycle.

Clonality

Monoclonal

Ig Type

Rabbit IgG

Applications

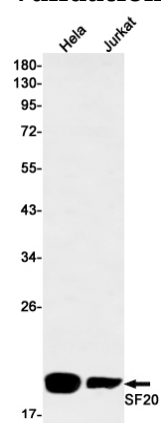
WB, FC

Dilutions

WB: 1/1000

FC: 1/20

Validations



Western blot detection of SF20 in HeLa, Jurkat cell lysates using SF20 Rabbit mAb(1:1000 diluted). Predicted band size: 19kDa. Observed band size: 19kDa.