

CCM2 Polyclonal Antibody



Catalog Number: 164927

Product name

CCM2 Polyclonal Antibody

Specificity

Human, Mouse, Rat

Antibody description

Polyclonal antibody to CCM2

Preparation

Antigen: Recombinant fusion protein containing a sequence corresponding to amino acids 1-300 of human CCM2 (NP_113631.1).

Formulation

PBS with 0.02% sodium azide, 50% glycerol, pH7.3.

Storage

Store at -20°C. Avoid freeze / thaw cycles.

Clonality

Polyclonal

Ig Type

Rabbit IgG

Applications

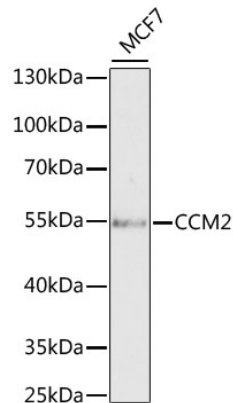
WB, IHC

Dilutions

WB 1:500 - 1:2000

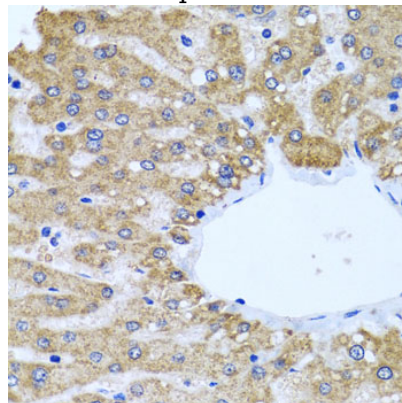
IHC 1:50 - 1:200

Validations



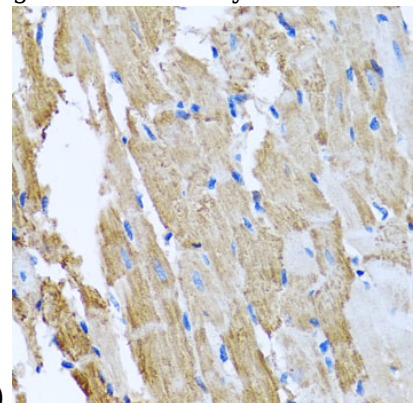
Western blot - CCM2 Polyclonal Antibody

Western blot analysis of extracts of MCF7 cells, using CCM2 antibody at 1:1000 dilution. Secondary antibody: HRP Goat Anti-Rabbit IgG (H+L) at 1:10000 dilution. Lysates/proteins: 25ug per lane. Blocking buffer: 3% nonfat dry milk in TBST. Detection: ECL Basic Kit. Exposure time: 90s.



Immunohistochemistry - CCM2 Polyclonal Antibody

Immunohistochemistry of paraffin-embedded human liver using CCM2 antibody at dilution of



1:100 (40x lens).

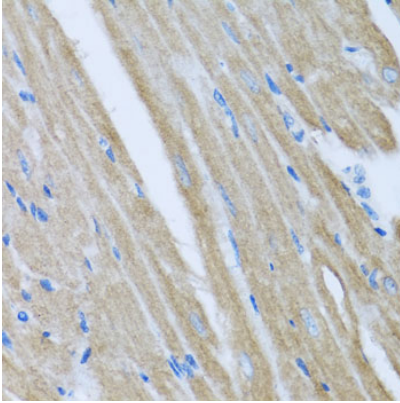
CCM2 Polyclonal Antibody



Catalog Number: 164927

Immunohistochemistry - CCM2 Polyclonal Antibody

Immunohistochemistry of paraffin-embedded rat heart using CCM2 antibody at dilution of 1:100



(40x lens).

Immunohistochemistry - CCM2 Polyclonal Antibody

Immunohistochemistry of paraffin-embedded mouse heart using CCM2 antibody at dilution of 1:100 (40x lens).