

# PLA2G4E antibody



Catalog Number: 113927

## Product name

PLA2G4E antibody

## Specificity

human, mouse, rat; other species not tested.

## Antibody description

PLA2G4E Rabbit Polyclonal antibody. Positive WB detected in SH-SY5Y cells, BxPC-3 cells, mouse pancreas tissue, mouse thymus tissue, SW 1990 cells. Positive IHC detected in human skeletal muscle. Observed molecular weight by Western-blot: 96kd

## Preparation

This antibody was obtained by immunization of PLA2G4E recombinant protein (Accession Number: BC101584). Purification method: Antigen affinity purified.

## Formulation

PBS with 0.02% sodium azide and 50% glycerol pH 7.3.

## Storage

Store at -20°C. DO NOT ALIQUOT

## Clonality

Polyclonal

## Ig Type

Rabbit IgG

## Applications

ELISA, WB, IHC

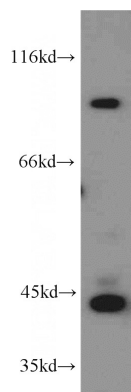
## Dilutions

Recommended Dilution:

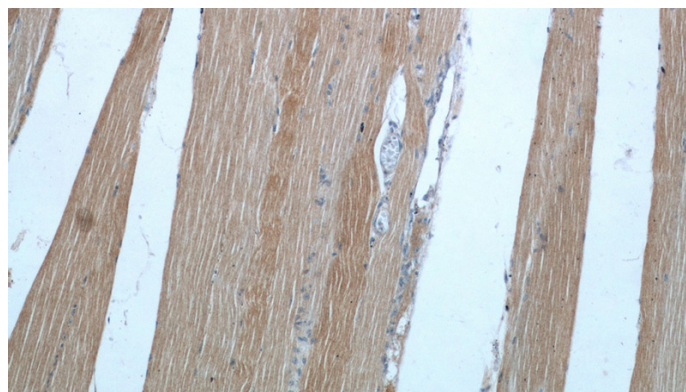
WB: 1:500-1:5000

IHC: 1:20-1:200

## Validations



SH-SY5Y cells were subjected to SDS PAGE followed by western blot with Catalog No:113927(PLA2G4E antibody) at dilution of 1:1000



Immunohistochemical of paraffin-embedded human skeletal muscle using Catalog No:113927(PLA2G4E antibody) at dilution of 1:50 (under 10x lens)



Immunohistochemical of paraffin-embedded human skeletal muscle using Catalog

# PLA2G4E antibody



Catalog Number: 113927

---

No:113927(PLA2G4E antibody) at dilution of 1:50 (under 40x lens)