

Anti-Cx3cr1 antibody



Catalog Number: 141927

Product name

Anti-Cx3cr1 antibody

Specificity

Human Cx3cr1

Antibody description

Rabbit Polyclonal to Human Cx3cr1

Preparation

Produced in rabbits immunized with a synthetic peptide corresponding to the center region of the Human Cx3cr1, and purified by antigen affinity chromatography.

Formulation

0.2 µm filtered solution in PBS

Storage

This antibody can be stored at 2°C-8°C for one month without detectable loss of activity. Antibody products are stable for twelve months from date of receipt when stored at -20°C to -80°C.

Preservative-Free.

Sodium azide is recommended to avoid contamination (final concentration 0.05%-0.1%). It is toxic to cells and should be disposed of

properly. Avoid repeated freeze-thaw cycles.

Clonality

Polyclonal

Ig Type

Rabbit IgG

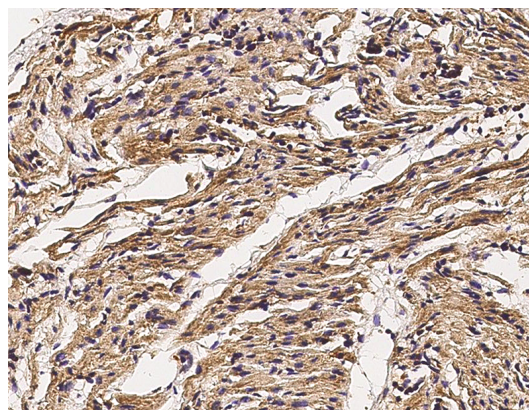
Applications

IHC-P

Dilutions

IHC-P: 0.1-2 µg/mL

Validations



Cx3cr1 Antibody, Rabbit PAb, Antigen Affinity Purified, Immunohistochemistry