

# SERPINE2 antibody



Catalog Number: 107527

## Product name

SERPINE2 antibody

## Specificity

Human; other species not tested.

## Antibody description

SERPINE2 Mouse Monoclonal antibody. Positive WB detected in HEK-293 cells. Positive IF detected in HEK-293 cells. Observed molecular weight by Western-blot: 44 kDa

## Preparation

This antibody was obtained by immunization of SERPINE2 recombinant protein (Accession Number: XM\_017004330). Purification method: Protein G purified.

## Formulation

PBS with 0.02% sodium azide and 50% glycerol pH 7.3.

## Storage

Store at -20°C. DO NOT ALIQUOT

## Clonality

Monoclonal

## Ig Type

Mouse IgG1

## Applications

ELISA, WB, IF

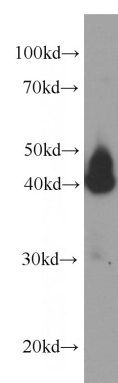
## Dilutions

Recommended Dilution:

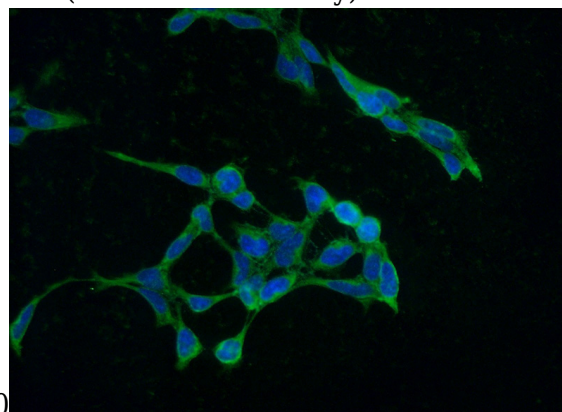
WB: 1:1000-1:10000

IF: 1:20-1:200

## Validations



HEK-293 cells were subjected to SDS PAGE followed by western blot with Catalog No:107527(SERPINE2 Antibody) at dilution of



1:2000  
Immunofluorescent analysis of (-20oc Ethanol) fixed HEK-293 cells using Catalog No:107527(SERPINE2 Antibody) at dilution of 1:50 and Alexa Fluor 488-conjugated AffiniPure Goat Anti-Mouse IgG(H+L)