

# Anti-BPI antibody

Catalog Number: 176527

## Product name

Anti-BPI antibody

## Specificity

Human, Zebrafish

## Antibody description

Rabbit monoclonal antibody to BPI

## Preparation

This antigen of this antibody was synthetic peptide within human bpi aa 120-170.

## Formulation

Liquid, 1\*TBS (pH7.4), 0.05% BSA, 40% Glycerol.  
Preservative: 0.05% Sodium Azide.

## Storage

Store at +4°C after thawing. Aliquot store at -20°C or -80°C. Avoid repeated freeze / thaw cycles.

## Clonality

Monoclonal

## Ig Type

Rabbit IgG

## Applications

WB, FC

## Dilutions

WB: 1:1,000-1:2,000

FC: 1:50-1:100

## Validations

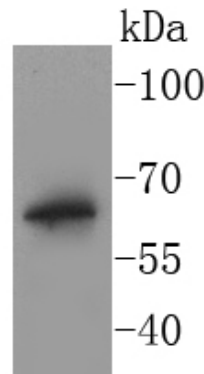


Fig1:; Western blot analysis of BPI on THP-1 cell lysates. Proteins were transferred to a PVDF membrane and blocked with 5% BSA in PBS for 1 hour at room temperature. The primary antibody (1/500) was used in 5% BSA at room temperature for 2 hours. Goat Anti-Rabbit IgG - HRP Secondary Antibody (HA1001) at 1:40,000 dilution was used for 1 hour at room temperature.

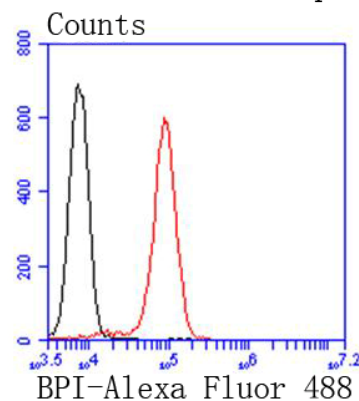


Fig2:; Flow cytometric analysis of BPI was done on Jurkat cells. The cells were fixed, permeabilized and stained with the primary antibody (1/50) (red). After incubation of the primary antibody at room temperature for an hour, the cells were stained with a Alexa Fluor 488-conjugated Goat anti-Rabbit IgG Secondary antibody at 1/1000 dilution for 30 minutes. Unlabelled sample was used as a control (cells without incubation with primary antibody; black).