

# MFF antibody

Catalog Number: 112527

## Product name

MFF antibody

## Specificity

Human, Mouse, Rat; other species not tested.

## Antibody description

MFF Rabbit Polyclonal antibody. Positive IF detected in HepG2 cells, Hela cells. Positive IHC detected in human brain tissue, human heart tissue, human stomach tissue. Positive WB detected in human brain tissue, HeLa cells, mouse brain tissue, rat brain tissue. Positive IP detected in mouse brain tissue. Observed molecular weight by Western-blot: 26-29, 35-38 kDa

## Preparation

This antibody was obtained by immunization of MFF recombinant protein (Accession Number: XM\_006712639). Purification method: Antigen affinity purified.

## Formulation

PBS with 0.02% sodium azide and 50% glycerol pH 7.3.

## Storage

Store at -20°C. DO NOT ALIQUOT

## Clonality

Polyclonal

## Ig Type

Rabbit IgG

## Applications

ELISA, WB, IHC, IP, IF

## Dilutions

Recommended Dilution:

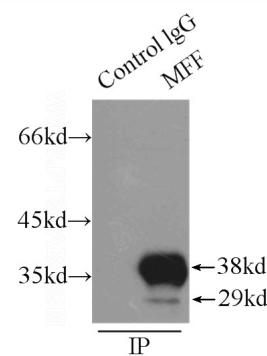
WB: 1:500-1:5000

IP: 1:500-1:5000

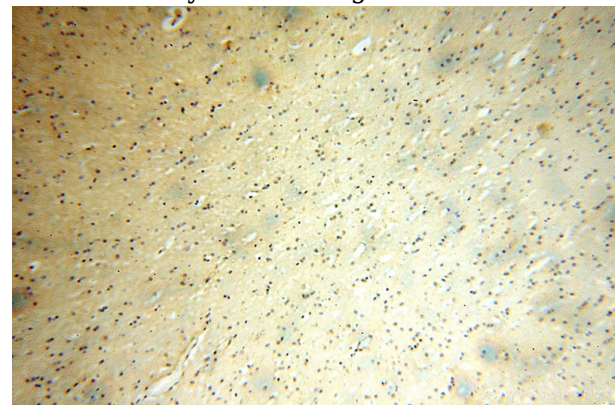
IHC: 1:20-1:200

IF: 1:20-1:200

## Validations



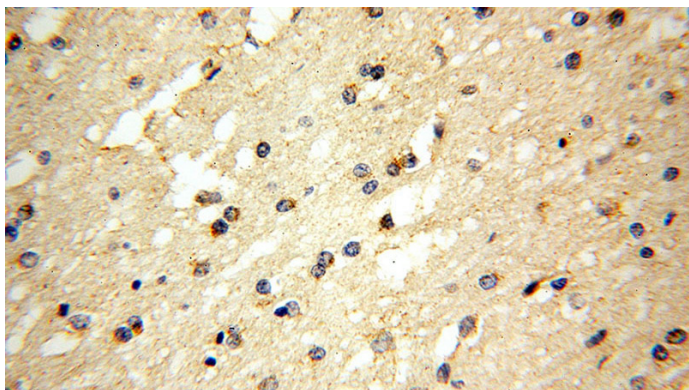
IP Result of anti-MFF (IP:Catalog No:112527, 3ug; Detection:Catalog No:112527 1:1000) with mouse brain tissue lysate 8000ug.



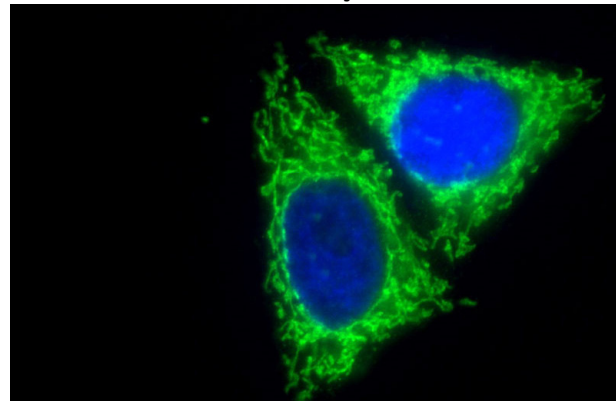
Immunohistochemical of paraffin-embedded human brain using Catalog No:112527(MFF antibody) at dilution of 1:100 (under 10x lens)

# MFF antibody

Catalog Number: 112527



human brain tissue were subjected to SDS PAGE followed by western blot with Catalog No:112527(MFF antibody) at dilution of 1:1000



Immunohistochemical of paraffin-embedded human brain using Catalog No:112527(MFF antibody) at dilution of 1:100 (under 40x lens)

Immunofluorescent analysis of (10% Formaldehyde) fixed HepG2 cells using Catalog No:112527(MFF Antibody) at dilution of 1:100 and Alexa Fluor 488-conjugated AffiniPure Goat Anti-Rabbit IgG(H+L)

