

Human EphA4/Eph Receptor A4 (aa 570-986, His & GST Tag) recombinant protein



Catalog Number: 502527

General Information

Gene Name Synonym

EPH-like kinase 8; Tyrosine-protein kinase TYRO1; Tyrosine-protein kinase receptor SEK

Protein Construction

A DNA sequence encoding the human EPHA4 (P54764) (Ser570-Val986) was fused with the N-terminal polyhistidine-tagged GST tag at the N-terminus.

Organism

Human

Expression Host

Baculovirus-Insect Cells

QC Testing

Activity

1. The specific activity was determined to be 17 nmol/min/mg using Poly(Glu:Tyr) 4:1 as substrate.
2. Measured by its binding ability in a functional ELISA. Immobilized human EPHA4 (aa 570-986) (Cat: 502527) at 10 µg/ml (100 µl/well) can bind biotinylated human EphrinA5-His with a linear range of 0.625-5.0 µg/ml.

Purity

> 99 % as determined by SDS-PAGE

Endotoxin

< 1.0 EU per µg of the protein as determined by the LAL method

Stability

Samples are stable for up to twelve months from date of receipt at -70°C

Predicted N terminal

Met

Molecular Mass

The recombinant human EPHA4 /GST chimera consists of 654 amino acids and has a calculated molecular mass of 75 kDa. The recombinant protein migrates as an approximately 67 kDa band in SDS-PAGE under reducing conditions.

Formulation

Supplied as sterile 20mM Tris, 500mM NaCl, pH 8.5, 10% glycerol, 3mM DTT

1. 5 % trehalose and mannitol are added as protectants before lyophilization.

2. Please contact us for any concerns or special requirements.

Usage Guide

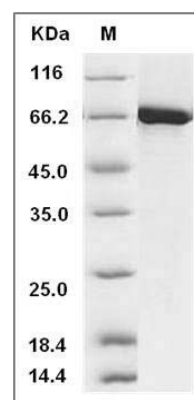
Storage

Store it under sterile conditions at -20°C to -80°C. It is recommended that the protein be aliquoted for optimal storage. Avoid repeated freeze-thaw cycles.

Reconstitution

Adding sterile water, prepare a stock solution of 0.25 mg/ml. Concentration is measured by UV-Vis.

SDS-PAGE



Human EphA4 / HEK8 Protein (aa 570-986, His & GST Tag) SDS-PAGE