

# Human CTRL-1 / Chymotrypsin-like protease (His Tag) recombinant protein



Catalog Number: 500527

## General Information

### Protein Construction

A DNA sequence encoding the human CTRL (P40313) (Met1-Asn264) was expressed with a polyhistidine tag at the C-terminus.

### Organism

Human

### Expression Host

Human Cells

## QC Testing

### Purity

(36.0+62.4) % as determined by SDS-PAGE

### Endotoxin

< 1.0 EU per  $\mu\text{g}$  of the protein as determined by the LAL method

### Stability

Samples are stable for up to twelve months from date of receipt at  $-70^{\circ}\text{C}$

### Predicted N terminal

Cys 19

### Molecular Mass

The recombinant human CTRL consists of 257 amino acids and predicts a molecular mass of 27.6 KDa. It migrates as an approximately 35 and

32KDa band in SDS-PAGE under reducing conditions.

### Formulation

Lyophilized from sterile PBS, pH 7.4.

1. 5 % trehalose and mannitol are added as protectants before lyophilization.

2. Please contact us for any concerns or special requirements.

## Usage Guide

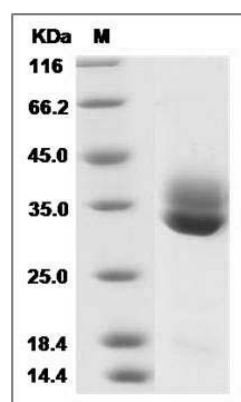
### Storage

Store it under sterile conditions at  $-20^{\circ}\text{C}$  to  $-80^{\circ}\text{C}$ . It is recommended that the protein be aliquoted for optimal storage. Avoid repeated freeze-thaw cycles.

### Reconstitution

Adding sterile water, prepare a stock solution of 0.25 mg/ml. Concentration is measured by UV-Vis.

### SDS-PAGE



Human CTRL-1 / CTRL / Chymotrypsin-like protease Protein (His Tag) SDS-PAGE