

Anti-p44/42 MAPK (ERK1/2) Rabbit antibody



Catalog Number: 167127

Product name

Anti-p44/42 MAPK (ERK1/2) Rabbit antibody

Specificity

Human, Mouse, Rat

Antibody description

p44/42 MAPK (ERK1/2) Rabbit polyclonal antibody

Preparation

Antigen: The antiserum was produced against synthesized peptide derived from human p44/42 MAPK. AA range:330-379

Formulation

Liquid in PBS containing 50% glycerol, 0.5% BSA and 0.02% sodium azide.

Storage

Store at 4°C short term. Store at -20°C long term. Avoid freeze / thaw cycle.

Clonality

Polyclonal

Ig Type

Rabbit IgG

Applications

ICC/IF, WB, IHC-P, ELISA

Dilutions

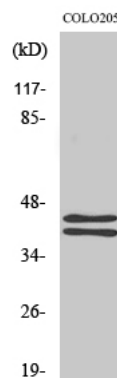
IF: 1/50-200

WB: 1/500 - 1/2000

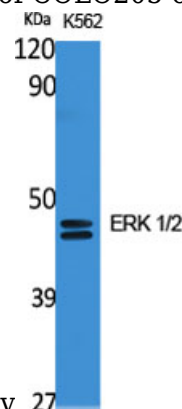
IHC: 1/100 - 1/300

ELISA: 1/10000

Validations

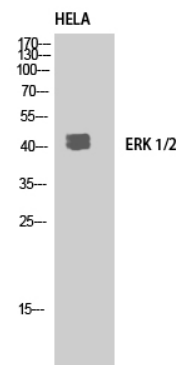


Western Blot analysis of COLO205 cells using ERK



1/2 Polyclonal Antibody

Western Blot analysis of K562 cells using ERK 1/2



Polyclonal Antibody

Western Blot analysis of HELA using ERK 1/2 Polyclonal Antibody.