

# Mouse Complement Factor H (His Tag) recombinant protein



Catalog Number: 504127

## General Information

### Protein Construction

A DNA sequence encoding the mouse Cfh (NP\_034018.2) (Ser875-Val1252) was expressed with a polyhistidine tag at the C-terminus.

### Organism

Mouse

### Expression Host

Human Cells

## QC Testing

### Purity

> 90 % as determined by SDS-PAGE.

### Endotoxin

< 1.0 EU per  $\mu$ g protein as determined by the LAL method.

### Stability

Samples are stable for up to twelve months from date of receipt at -70°C

### Predicted N terminal

Ser 875

### Molecular Mass

The recombinant mouse Cfh consists 389 amino

acids and predicts a molecular mass of 43.8 kDa.

### Formulation

Lyophilized from sterile PBS, pH 7.4.

1. 5 % trehalose and mannitol are added as protectants before lyophilization.

2. Please contact us for any concerns or special requirements.

## Usage Guide

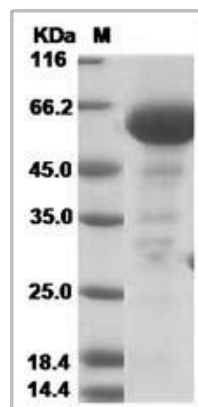
### Storage

Store it under sterile conditions at -20°C to -80°C. It is recommended that the protein be aliquoted for optimal storage. Avoid repeated freeze-thaw cycles.

### Reconstitution

Adding sterile water, prepare a stock solution of 0.25 mg/ml. Concentration is measured by UV-Vis.

### SDS-PAGE



Mouse Complement Factor H Protein (His Tag)