

Anti-Mannose Receptor Rabbit antibody



Catalog Number: 168827

Product name

Rabbit IgG

Anti-Mannose Receptor Rabbit antibody

Applications

Specificity

WB, ICC/IF, FC

Human

Dilutions

Antibody description

WB: 1/1000

Mannose Receptor Rabbit monoclonal antibody

ICC/IF: 1/20

Preparation

FC: 1/20

Antigen: A synthetic peptide of human Mannose Receptor

Validations

Formulation

50nM Tris-Glycine(pH 7.4), 0.15M NaCl, 40%Glycerol, 0.01% sodium azide and 0.05% BSA.

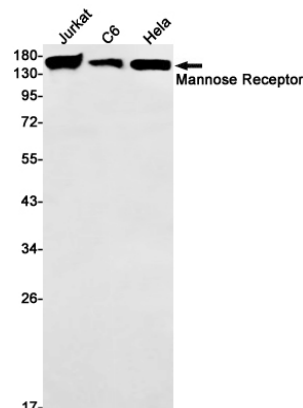
Storage

Store at 4°C short term. Store at -20°C long term. Avoid freeze / thaw cycle.

Clonality

Monoclonal

Ig Type



Western blot detection of Mannose Receptor in Jurkat, C6, HeLa cell lysates using Mannose Receptor Rabbit mAb(1:1000 diluted). Predicted band size: 166kDa. Observed band size: 166kDa.