

# Anti-SMARCC1/BAF155 Rabbit antibody



Catalog Number: 166827

## Product name

Anti-SMARCC1/BAF155 Rabbit antibody

## Specificity

Human, Rat

## Antibody description

SMARCC1/BAF155 Rabbit polyclonal antibody

## Preparation

Antigen: A synthetic peptide of human SMARCC1

## Formulation

Supplied in 50nM Tris-Glycine(pH 7.4), 0.15M NaCl, 40%Glycerol, 0.01% sodium azide and 0.05% BSA.

## Storage

Store at -20°C. Stable for 12 months from date of receipt.

## Clonality

Polyclonal

## Ig Type

Rabbit IgG

## Applications

WB, ICC/IF, FC, IP

## Dilutions

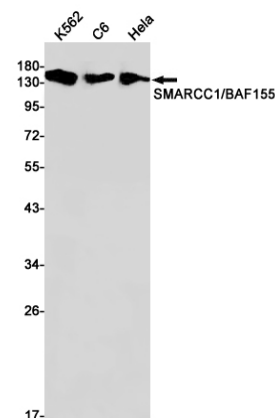
WB: 1/1000-1/5000

ICC/IF: 1/50-1/200

FC: 1/20

IP: 1/20-1/50

## Validations



Western blot detection of SMARCC1/BAF155 in K562, C6, HeLa cell lysates using SMARCC1/BAF155 Rabbit pAb(1:1000 diluted). Predicted band size: 123kDa. Observed band size: 155kDa.