

SULT1A4 antibody



Catalog Number: 115827

Product name

SULT1A4 antibody

WB: 1:500-1:5000

IHC: 1:20-1:200

Specificity

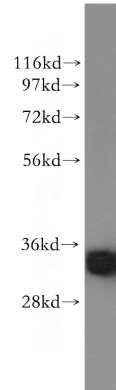
Human, Mouse; other species not tested.

IF: 1:10-1:100

Antibody description

SULT1A4 Rabbit Polyclonal antibody. Positive IHC detected in human breast cancer tissue. Positive IF detected in HepG2 cells. Positive WB detected in human colon tissue, BxPC-3 cells, HepG2 cells, human pancreas tissue, mouse pancreas tissue. Observed molecular weight by Western-blot: 30-34 kDa

Validations



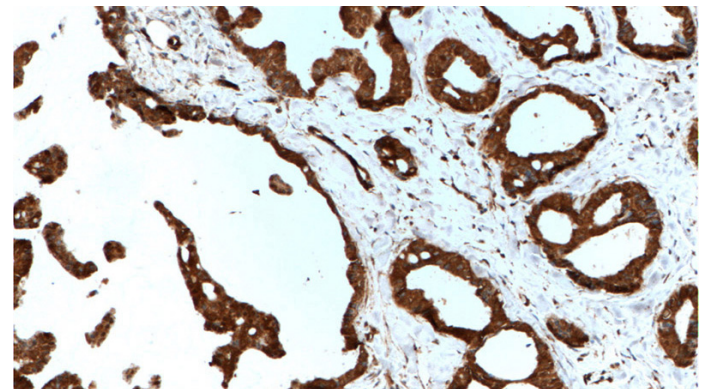
Preparation

This antibody was obtained by immunization of SULT1A4 recombinant protein (Accession Number: NM_001017391). Purification method: Antigen affinity purified.

human colon tissue were subjected to SDS PAGE followed by western blot with Catalog No:115827(SULT1A4 antibody) at dilution of 1:300

Formulation

PBS with 0.1% sodium azide and 50% glycerol pH 7.3.



Storage

Store at -20°C. DO NOT ALIQUOT

Clonality

Polyclonal

Ig Type

Rabbit IgG

Immunohistochemistry of paraffin-embedded human breast cancer tissue slide using Catalog No:115827(SULT1A4 Antibody) at dilution of 1:200 (under 10x lens). heat mediated antigen retrieved with Tris-EDTA buffer(pH9).

Applications

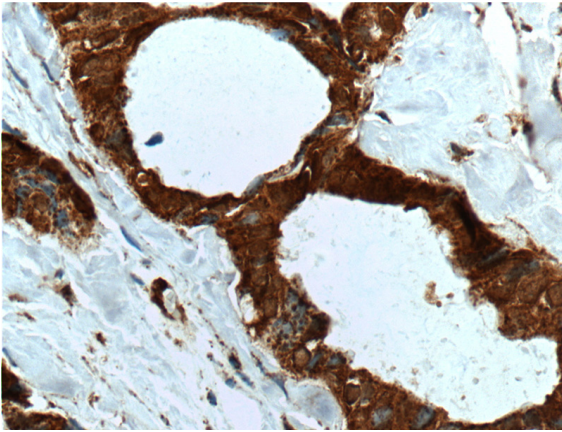
ELISA, WB, IF, IHC

Dilutions

Recommended Dilution:

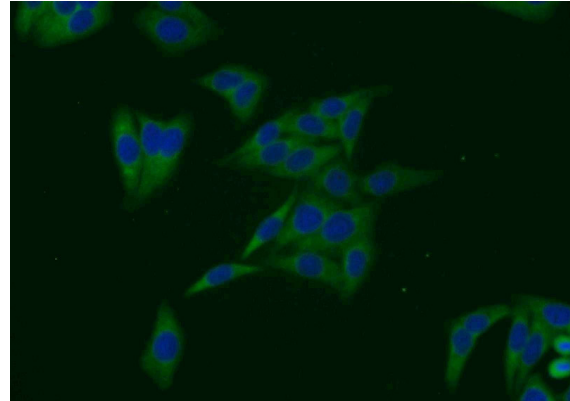
SULT1A4 antibody

Catalog Number: 115827



Immunohistochemistry of paraffin-embedded human breast cancer tissue slide using Catalog No:115827(SULT1A4 Antibody) at dilution of 1:200 (under 40x lens). heat mediated antigen

retrieved with Tris-EDTA buffer(pH9).



Immunofluorescent analysis of HepG2 cells using Catalog No:115827(SULT1A4 Antibody) at dilution of 1:25 and Alexa Fluor 488-conjugated AffiniPure Goat Anti-Rabbit IgG(H+L)