

RPS12 antibody

Catalog Number: 114827

Product name

RPS12 antibody

IHC: 1:20-1:200

IF: 1:10-1:100

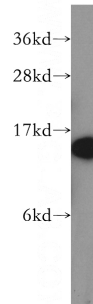
Specificity

Human, Mouse, Rat; other species not tested.

Antibody description

RPS12 Rabbit Polyclonal antibody. Positive WB detected in HeLa cells, MCF7 cells, NIH/3T3 cells. Positive IF detected in HepG2 cells. Positive IHC detected in human colon cancer tissue. Observed molecular weight by Western-blot: 15kd

Validations



Preparation

This antibody was obtained by immunization of RPS12 recombinant protein (Accession Number: NM_001016). Purification method: Antigen affinity purified.

HeLa cells were subjected to SDS PAGE followed by western blot with Catalog No:114827(RPS12 antibody) at dilution of 1:500

Formulation

PBS with 0.02% sodium azide and 50% glycerol pH 7.3.

Storage

Store at -20°C. DO NOT ALIQUOT

Clonality

Polyclonal

Ig Type

Rabbit IgG

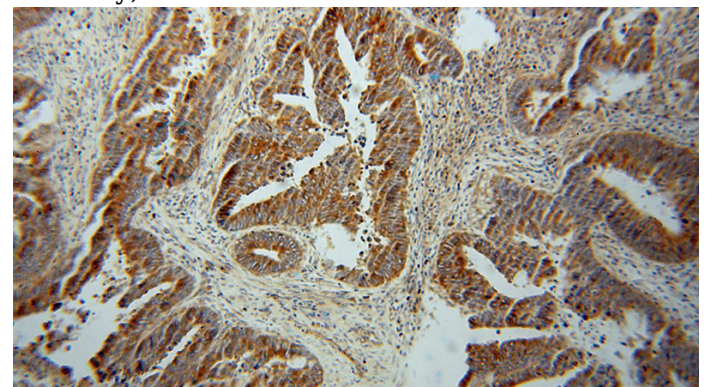
Applications

ELISA, WB, IHC, IF

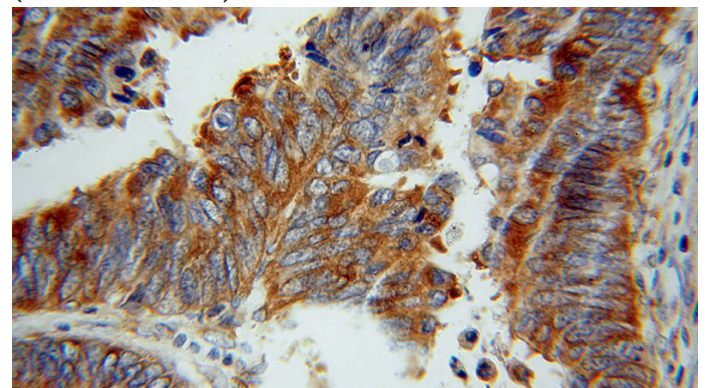
Dilutions

Recommended Dilution:

WB: 1:200-1:2000



Immunohistochemical of paraffin-embedded human colon cancer using Catalog No:114827(RPS12 antibody) at dilution of 1:50 (under 10x lens)

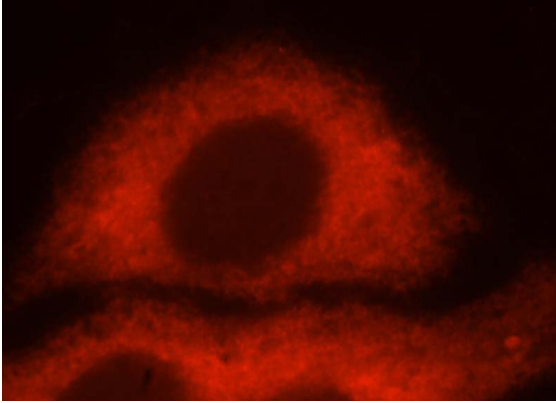


Immunohistochemical of paraffin-embedded

RPS12 antibody

Catalog Number: 114827

human colon cancer using Catalog
No:114827(RPS12 antibody) at dilution of 1:50
(under 40x lens)



Immunofluorescent analysis of HepG2 cells, using
RPS12 antibody Catalog No:114827 at 1:25
dilution and Rhodamine-labeled goat anti-rabbit
IgG (red).