

Canine CXCL16 / SR-PSOX (His Tag) recombinant protein



Catalog Number: 504827

General Information

Protein Construction

A DNA sequence encoding the canine CXCL16(XP_849304.2) (Met1-Ser205) was expressed with a C-terminal polyhistidine tag.

Organism

Canine

Expression Host

Human Cells

QC Testing

Purity

> 95 % as determined by SDS-PAGE

Endotoxin

< 1.0 EU per μg of the protein as determined by the LAL method

Stability

Samples are stable for up to twelve months from date of receipt at -70°C

Predicted N terminal

Asn 22

Molecular Mass

The recombinant canine CXCL16 comprises 195 amino acids and has a predicted molecular mass of 21.5 kDa. The apparent molecular mass of the

protein is approximately 41-46 kDa in SDS-PAGE under reducing conditions due to glycosylation.

Formulation

Lyophilized from sterile PBS, pH 7.4.

1. 5 % trehalose and mannitol are added as protectants before lyophilization.

2. Please contact us for any concerns or special requirements.

Usage Guide

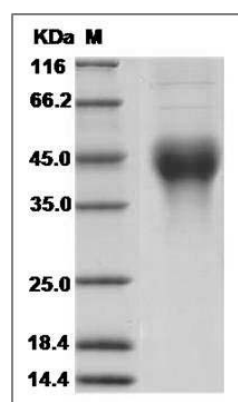
Storage

Store it under sterile conditions at -20°C to -80°C . It is recommended that the protein be aliquoted for optimal storage. Avoid repeated freeze-thaw cycles.

Reconstitution

Adding sterile water, prepare a stock solution of 0.25 mg/ml. Concentration is measured by UV-Vis.

SDS-PAGE



Canine CXCL16 / SR-PSOX Protein (His Tag) SDS-PAGE