

# phospho(409/410)-TDP43 antibody



Catalog Number: 113827

## Product name

phospho(409/410)-TDP43 antibody

Polyclonal

## Ig Type

Rabbit IgG

## Specificity

Human, Mouse; other species not tested.

## Applications

ELISA, WB

## Antibody description

phospho(409/410)-TDP43 Rabbit Polyclonal antibody. Positive WB detected in human placenta tissue, human heart tissue, mouse heart tissue. Observed molecular weight by Western-blot: 45-50 kDa

## Dilutions

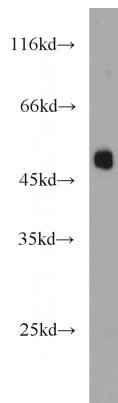
Recommended Dilution:

WB: 1:500-1:5000

## Preparation

This antibody was obtained by immunization of Peptide (Accession Number: NM\_007375). Purification method: Antigen affinity purified.

## Validations



human placenta tissue were subjected to SDS PAGE followed by western blot with Catalog No:113827(phospho(409/410)-TDP43 antibody) at dilution of 1:1000

## Formulation

PBS with 0.02% sodium azide and 50% glycerol pH 7.3.

## Storage

Store at -20°C. DO NOT ALIQUOT

## Clonality