

# MME,CD10 antibody



Catalog Number: 107427

## Product name

MME,CD10 antibody

## Specificity

Human, Pig; other species not tested.

## Antibody description

MME,CD10 Mouse Monoclonal antibody. Positive IHC detected in human renal cell carcinoma tissue, human kidney tissue, human tonsil tissue. Positive WB detected in pig kidney tissue, mouse kidney tissue. Observed molecular weight by Western-blot: 100 kDa

## Preparation

This antibody was obtained by immunization of MME,CD10 recombinant protein (Accession Number: NM\_001354643). Purification method: Caprylic acid/ammonium sulfate precipitation.

## Formulation

PBS with 0.1% sodium azide and 50% glycerol pH 7.3.

## Storage

Store at -20°C. DO NOT ALIQUOT

## Clonality

Monoclonal

## Ig Type

Mouse IgG2b

## Applications

ELISA, IHC, WB

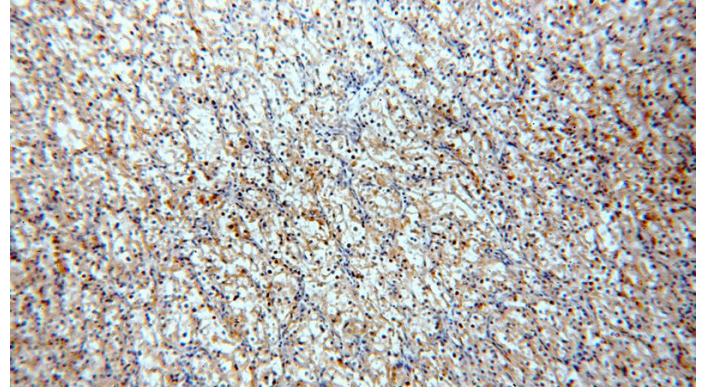
## Dilutions

Recommended Dilution:

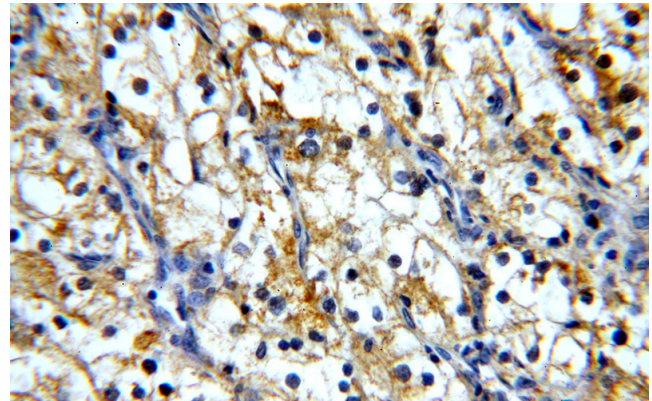
WB: 1:500-1:5000

IHC: 1:20-1:200

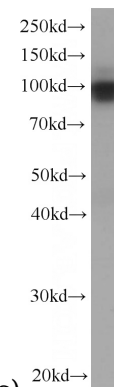
## Validations



Immunohistochemical of paraffin-embedded human renal cell carcinoma using Catalog No:107427(MME,CD10 antibody) at dilution of 1:100 (under 10x lens)



Immunohistochemical of paraffin-embedded human renal cell carcinoma using Catalog No:107427(MME,CD10 antibody) at dilution of



1:100 (under 40x lens)

pig kidney tissue were subjected to SDS PAGE followed by western blot with Catalog No:107427(MME,CD10 Antibody) at dilution of

# MME,CD10 antibody



Catalog Number: 107427

---

1:1000