

# Anti-Carboxypeptidase A2/CPA2 antibody



Catalog Number: 100427

## Product name

Anti-Carboxypeptidase A2/CPA2 antibody

## Immunogen

[Mouse Carboxypeptidase A2/CPA2 \(His Tag\) recombinant protein](#)

## Specificity

Mouse Carboxypeptidase A2 / CPA2  
**No cross-reactivity** in ELISA with Mouse CPA1;  
Mouse CPB1

## Antibody description

Rabbit monoclonal to Carboxypeptidase A2/CPA2

## Preparation

This antibody was obtained from a rabbit immunized with purified, recombinant Mouse Carboxypeptidase A2 / CPA2 (rM Carboxypeptidase A2 / CPA2; Q504N0; Met1-Tyr417).

## Formulation

0.2 µm filtered solution in PBS

## Storage

This antibody can be stored at 2°C-8°C for one month without detectable loss of activity. Antibody products are stable for twelve months from date of receipt when stored at -20°C to -80°C.  
Preservative-Free.  
Sodium azide is recommended to avoid

contamination (final concentration 0.05%-0.1%). It is toxic to cells and should be disposed of properly. Avoid repeated freeze-thaw cycles.

## Clonality

Monoclonal

## Ig Type

Rabbit IgG

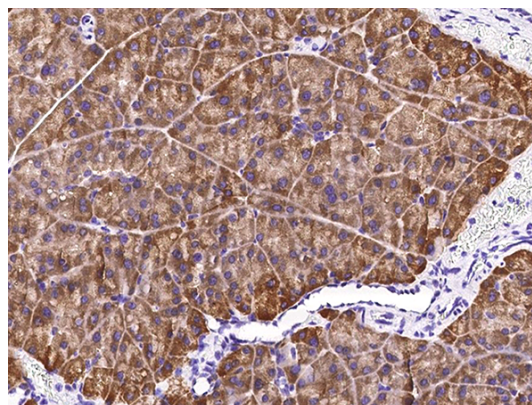
## Applications

IHC-P

## Dilutions

IHC-P: 1-10µg/mL

## Validations



Carboxypeptidase A2 / CPA2 Antibody, Rabbit MAb, Immunohistochemistry

Immunochemical staining of mouse CPA2 in mouse pancreas with rabbit monoclonal antibody (5 µg/mL, formalin-fixed paraffin embedded sections).