

Anti-CD69 / CLEC2C antibody



Catalog Number: 103027

Product name

Anti-CD69 / CLEC2C antibody

Immunogen

[Human CD69 / CLEC2C \(His Tag\) recombinant protein](#)

Specificity

Human CD69

Antibody description

Rabbit monoclonal to CD69 / CLEC2C

Preparation

This antibody was obtained from a rabbit immunized with purified, recombinant Human CD69 (rh CD69; NP_001772.1; Ser 62-Lys 199).

Formulation

0.2 µm filtered solution in PBS with 5% trehalose

Storage

This antibody can be stored at 2°C-8°C for one month without detectable loss of activity. Antibody products are stable for twelve months from date of receipt when stored at -20°C to -80°C.

Preservative-Free.

Sodium azide is recommended to avoid contamination (final concentration 0.05%-0.1%). It is toxic to cells and should be disposed of properly. Avoid repeated freeze-thaw cycles.

Clonality

Monoclonal

Ig Type

Rabbit IgG

Applications

ELISA, WB, IP

Dilutions

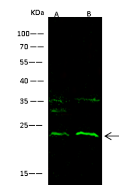
WB: 10-20 µg/ml

ELISA: 0.1-0.2 µg/mL

This antibody can be used at 0.1-0.2 µg/mL with the appropriate secondary reagents to detect Human CD69. The detection limit for Human CD69 is approximately 0.0049 ng/well.

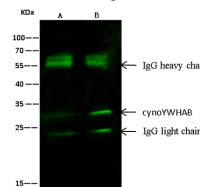
IP: 4-6 µg/mg of lysate

Validations



Lanes	A	B
Items	Jurkat	HeLa
Sample (whole cell lysate)		
Sample Volume (µg/lane)	60	60
Gel	13% SDS-PAGE reducing gel	
Recommended Concentration	10-20 µg/ml	
Secondary Antibody	Dylight 800-labeled Antibody To Rabbit IgG (H+L) at 1:5000 dilution	
Explanation	Developed using Odyssey imaging system. Predicted band size: 23 kDa Observed band size: 32 kDa Additional bands at: 32 kDa and 35 kDa (We are unsure as to the identity of these extra bands. They are possible non-specific bindings).	

CD69 Antibody, Rabbit MAb, Western blot



Lanes	A	B
Items	HeLa	HepG2
Sample (whole cell lysate)		
Sample quantity	0.5 mg	
IP antibody quantity	2 µg	
Protein G agarose	15 µl of 50% Protein G Agarose	
Gel	13% SDS-PAGE reducing gel	
Primary antibody	cynoYWHA8 antibody at 5 µg/ml [Cat# 90022-MM05]	
Secondary antibody	Dylight 800-labeled antibody to mouse IgG (H+L) at 1:7500 dilution	

CD69 Antibody, Rabbit MAb, Immunoprecipitation