

# IRF7 Polyclonal Antibody



Catalog Number: 160027

## Product name

IRF7 Polyclonal Antibody

## Specificity

Human, Mouse

## Antibody description

Polyclonal antibody to IRF7

## Preparation

Antigen: Recombinant fusion protein containing a sequence corresponding to amino acids 257-516 of human IRF7 (NP\_004022.2).

## Formulation

PBS with 0.02% sodium azide, 50% glycerol, pH7.3.

## Storage

Store at -20°C. Avoid freeze / thaw cycles.

## Clonality

Polyclonal

## Ig Type

Rabbit IgG

## Applications

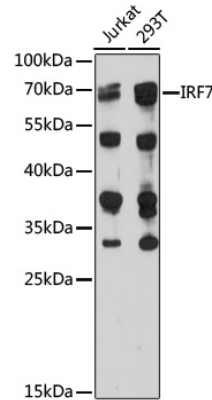
WB, IF

## Dilutions

WB 1:500 - 1:2000

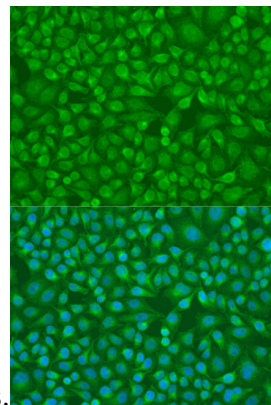
IF 1:50 - 1:200

## Validations



Western blot - IRF7 Polyclonal Antibody

Western blot analysis of extracts of 293T cells, using IRF7 antibody at 1:1000 dilution. Secondary antibody: HRP Goat Anti-Rabbit IgG (H+L) at 1:10000 dilution. Lysates/proteins: 25ug per lane. Blocking buffer: 3% nonfat dry milk in TBST. Detection: ECL Enhanced Kit. Exposure



time: 15s.

Immunofluorescence - IRF7 Polyclonal Antibody

Immunofluorescence analysis of U2OS cells using IRF7 antibody at dilution of 1:100. Blue: DAPI for nuclear staining.