

Human REG4 (Fc Tag) recombinant protein



Catalog Number: 503717

General Information

Gene Name Synonym

Gastrointestinal secretory protein; REG-like protein; Regenerating islet-derived protein IV

Protein Construction

A DNA sequence encoding the human REG4 (Q9BYZ8-1) (Asp23-Pro158) was expressed with the fused Fc region of human IgG1 at the N-terminus.

Organism

Human

Expression Host

Human Cells

QC Testing

Purity

> 90 % as determined by SDS-PAGE

Endotoxin

< 1.0 EU per μg of the protein as determined by the LAL method

Stability

Samples are stable for up to twelve months from date of receipt at -70°C

Predicted N terminal

Glu

Molecular Mass

The recombinant human REG4/Fc is a disulfide-

linked homodimer. The reduced monomer comprises 396 amino acids and has a predicted molecular mass of 44.3 kDa. The apparent molecular mass of the protein is approximately 45 kDa in SDS-PAGE under reducing conditions due to glycosylation.

Formulation

Lyophilized from sterile PBS, pH 7.4.

1. 5 % trehalose and mannitol are added as protectants before lyophilization.

2. Please contact us for any concerns or special requirements.

Usage Guide

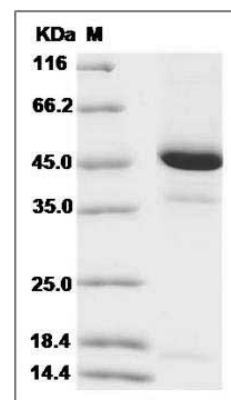
Storage

Store it under sterile conditions at -20°C to -80°C . It is recommended that the protein be aliquoted for optimal storage. Avoid repeated freeze-thaw cycles.

Reconstitution

Adding sterile water, prepare a stock solution of 0.25 mg/ml. Concentration is measured by UV-Vis.

SDS-PAGE



Human REG4 / RELP / GISP Protein (Fc Tag) SDS-PAGE