

# LRDD antibody

Catalog Number: 112317

## Product name

LRDD antibody

IP: 1:200-1:2000

IHC: 1:20-1:200

## Specificity

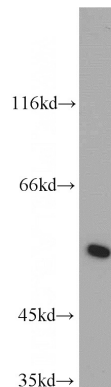
Human, Mouse, Rat; other species not tested.

IF: 1:10-1:100

## Antibody description

LRDD Rabbit Polyclonal antibody. Positive IHC detected in human pancreas tissue, human liver tissue. Positive IF detected in Hela cells. Positive IP detected in L02 cells. Positive WB detected in L02 cells, HEK-293 cells. Observed molecular weight by Western-blot: 55 kDa

## Validations



## Preparation

This antibody was obtained by immunization of LRDD recombinant protein (Accession Number: NM\_145887). Purification method: Antigen affinity purified.

L02 cells were subjected to SDS PAGE followed by western blot with Catalog No:112317(LRDD antibody) at dilution of 1:300

## Formulation

PBS with 0.02% sodium azide and 50% glycerol pH 7.3.

## Storage

Store at -20°C. DO NOT ALIQUOT

## Clonality

Polyclonal

## Ig Type

Rabbit IgG

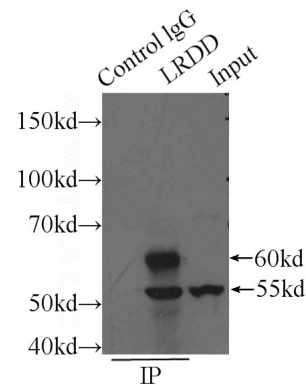
## Applications

ELISA, IF, IP, WB, IHC

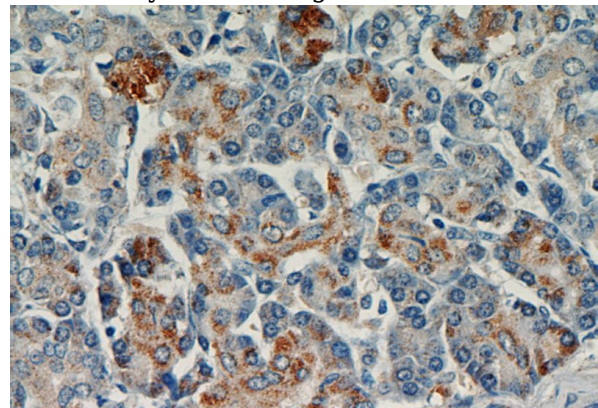
## Dilutions

Recommended Dilution:

WB: 1:200-1:1000



IP Result of anti-LRDD (IP:Catalog No:112317, 4ug; Detection:Catalog No:112317 1:500) with L02 cells lysate 2800ug.

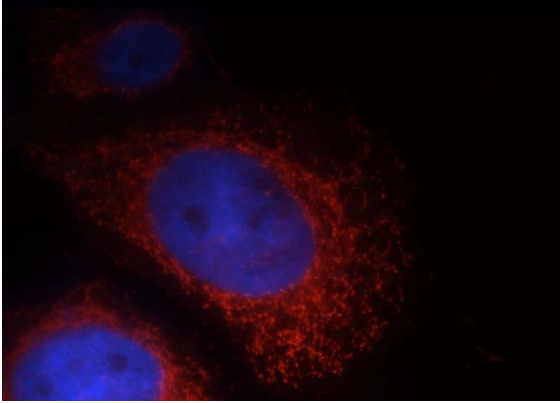


# LRDD antibody

Catalog Number: 112317

---

Immunohistochemical of paraffin-embedded human pancreas using Catalog No:112317(LRDD antibody) at dilution of 1:50 (under 40x lens)



Immunofluorescent analysis of Hela cells, using LRDD antibody Catalog No:112317 at 1:25 dilution and Rhodamine-labeled goat anti-rabbit IgG (red). Blue pseudocolor = DAPI (fluorescent DNA dye).