

# C1GALT1 Polyclonal Antibody



Catalog Number: 161317

## Product name

C1GALT1 Polyclonal Antibody

## Specificity

Human, Mouse

## Antibody description

Polyclonal antibody to C1GALT1

## Preparation

Antigen: Recombinant fusion protein containing a sequence corresponding to amino acids 194-363 of human C1GALT1 (NP\_064541.1).

## Formulation

PBS with 0.02% sodium azide, 50% glycerol, pH7.3.

## Storage

Store at -20°C. Avoid freeze / thaw cycles.

## Clonality

Polyclonal

## Ig Type

Rabbit IgG

## Applications

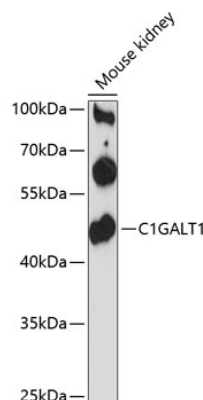
WB, IHC

## Dilutions

WB 1:500 - 1:2000

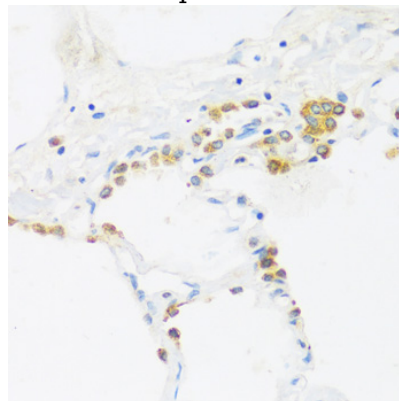
IHC 1:50 - 1:100

## Validations



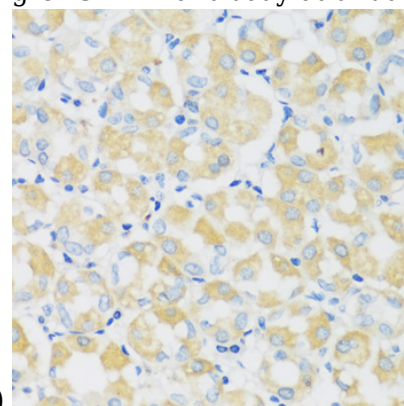
## Western blot - C1GALT1 Polyclonal Antibody

Western blot analysis of extracts of mouse kidney, using C1GALT1 antibody at 1:3000 dilution. Secondary antibody: HRP Goat Anti-Rabbit IgG (H+L) at 1:10000 dilution. Lysates/proteins: 25ug per lane. Blocking buffer: 3% nonfat dry milk in TBST. Detection: ECL Basic Kit. Exposure time: 90s.



## Immunohistochemistry - C1GALT1 Polyclonal Antibody

Immunohistochemistry of paraffin-embedded human lung using C1GALT1 antibody at dilution of



1:100 (40x lens).

# C1GALT1 Polyclonal Antibody

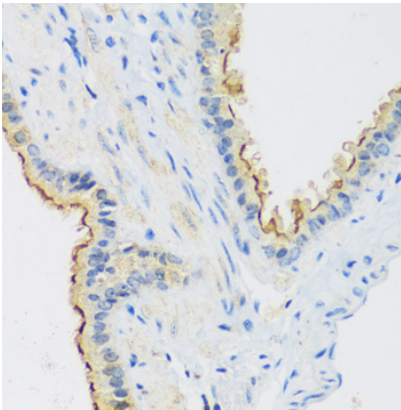


Catalog Number: 161317

---

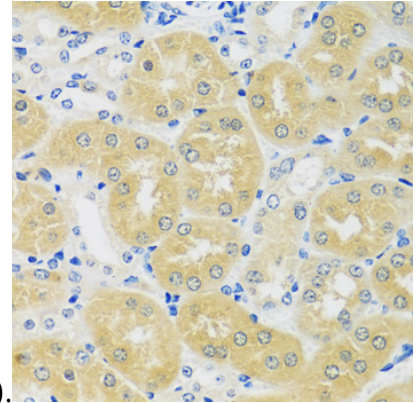
Immunohistochemistry - C1GALT1 Polyclonal Antibody

Immunohistochemistry of paraffin-embedded human stomach using C1GALT1 antibody at dilution of 1:100 (40x lens).



Immunohistochemistry - C1GALT1 Polyclonal Antibody

Immunohistochemistry of paraffin-embedded mouse lung using C1GALT1 antibody at dilution of



1:100 (40x lens).

Immunohistochemistry - C1GALT1 Polyclonal Antibody

Immunohistochemistry of paraffin-embedded mouse kidney using C1GALT1 antibody at dilution of 1:100 (40x lens).