

# CSTF1 antibody

Catalog Number: 109617

## Product name

CSTF1 antibody

## Specificity

Human; other species not tested.

## Antibody description

CSTF1 Rabbit Polyclonal antibody. Positive WB detected in HeLa cells, K-562 cells. Positive IP detected in K-562 cells. Observed molecular weight by Western-blot: 50kd

## Preparation

This antibody was obtained by immunization of CSTF1 recombinant protein (Accession Number: NM\_001033521). Purification method: Antigen affinity purified.

## Formulation

PBS with 0.02% sodium azide and 50% glycerol pH 7.3.

## Storage

Store at -20°C. DO NOT ALIQUOT

## Clonality

Polyclonal

## Ig Type

Rabbit IgG

## Applications

ELISA, WB, IP

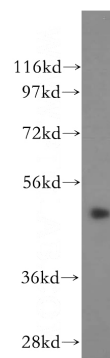
## Dilutions

Recommended Dilution:

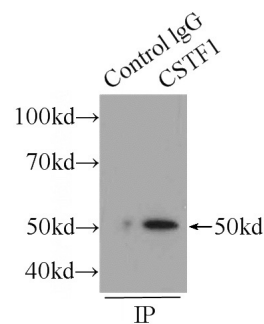
WB: 1:500-1:5000

IP: 1:200-1:2000

## Validations



HeLa cells were subjected to SDS PAGE followed by western blot with Catalog No:109617(CSTF1 antibody) at dilution of 1:500



IP Result of anti-CSTF1 (IP:Catalog No:109617, 4ug; Detection:Catalog No:109617 1:500) with K-562 cells lysate 1540ug.