

# Anti-phospho-Cdc37 (Ser13) Rabbit antibody



Catalog Number: 167617

## Product name

Anti-phospho-Cdc37 (Ser13) Rabbit antibody

## Ig Type

Rabbit IgG

## Specificity

Human, Mouse, Rat

## Applications

WB, IP

## Antibody description

phospho-Cdc37 (Ser13) Rabbit monoclonal antibody

## Dilutions

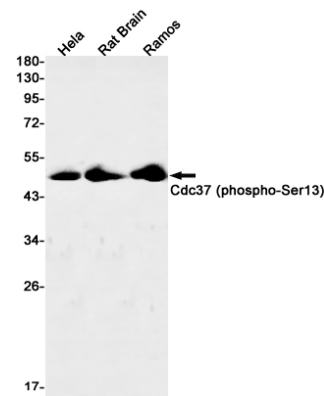
WB: 1/1000

IP: 1/20

## Preparation

Antigen: A synthetic phosphopeptide corresponding to residues surrounding Ser13 of human Cdc37

## Validations



Western blot detection of Cdc37 (phospho-Ser13) in HeLa, Rat Brain, Ramos cell lysates using Cdc37 (phospho-Ser13) Rabbit mAb(1:1000 diluted). Predicted band size: 45kDa. Observed band size: 45kDa.

## Formulation

50nM Tris-Glycine(pH 7.4), 0.15M NaCl, 40%Glycerol, 0.01% sodium azide and 0.05% BSA

## Storage

Store at 4°C short term. Store at -20°C long term. Avoid freeze / thaw cycle.

## Clonality

Monoclonal