

PBXIP1 antibody

Catalog Number: 113617

Product name

PBXIP1 antibody

IP: 1:200-1:2000

IHC: 1:20-1:200

Specificity

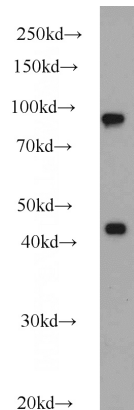
Human; other species not tested.

IF: 1:10-1:100

Antibody description

PBXIP1 Rabbit Polyclonal antibody. Positive WB detected in HeLa cells, A549 cells, BxPC-3 cells. Positive IP detected in HeLa cells. Positive IF detected in HepG2 cells, HeLa cells. Positive IHC detected in human lung cancer tissue. Observed molecular weight by Western-blot: 95 kDa

Validations



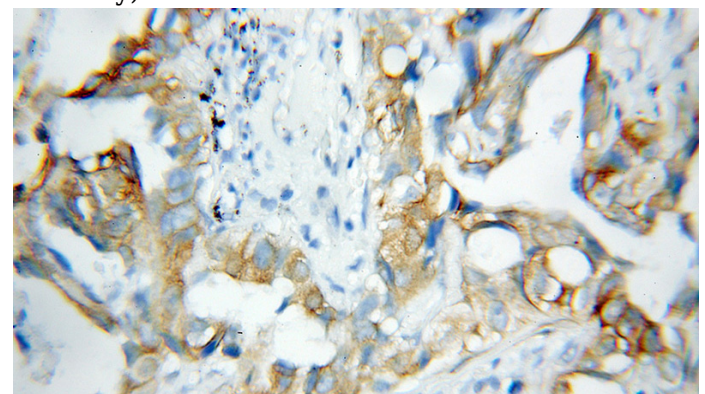
Preparation

This antibody was obtained by immunization of PBXIP1 recombinant protein (Accession Number: NM_020524). Purification method: Antigen affinity purified.

HeLa cells were subjected to SDS PAGE followed by western blot with Catalog No:113617(PBXIP1 antibody) at dilution of 1:1000

Formulation

PBS with 0.1% sodium azide and 50% glycerol pH 7.3.



Storage

Store at -20°C. DO NOT ALIQUOT

Clonality

Polyclonal

Ig Type

Rabbit IgG

Applications

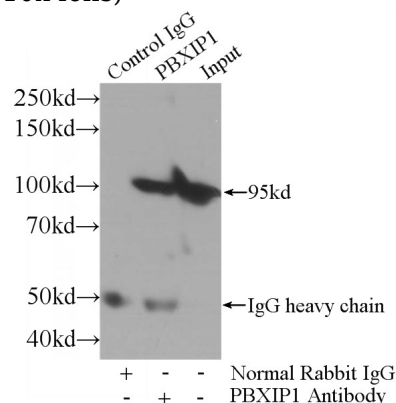
ELISA, WB, IHC, IF, IP

Dilutions

Recommended Dilution:

WB: 1:500-1:5000

Immunohistochemical of paraffin-embedded human lung cancer using Catalog No:113617(PBXIP1 antibody) at dilution of 1:100 (under 10x lens)

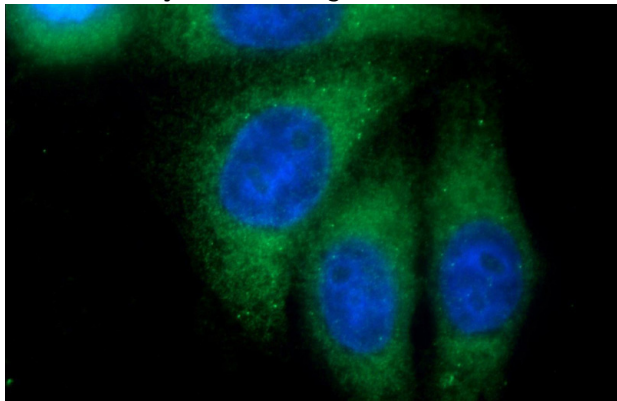


PBXIP1 antibody



Catalog Number: 113617

IP Result of anti-PBXIP1 (IP:Catalog No:113617, 3ug; Detection:Catalog No:113617 1:800) with HeLa cells lysate 3000ug.



Immunofluorescent analysis of HepG2 cells using Catalog No:113617(PBXIP1 Antibody) at dilution of 1:25 and Alexa Fluor 488-conjugated AffiniPure Goat Anti-Rabbit IgG(H+L)