

# CHD1 antibody

Catalog Number: 109217

## Product name

CHD1 antibody

IP: 1:200-1:1000

IHC: 1:20-1:200

## Specificity

Human, Mouse, Rat; other species not tested.

## Antibody description

CHD1 Rabbit Polyclonal antibody. Positive IHC detected in human breast cancer tissue. Positive WB detected in HeLa cells, A431 cells, human brain tissue, Jurkat cells. Positive IP detected in HeLa cells. Observed molecular weight by Western-blot: 200 kDa

## Preparation

This antibody was obtained by immunization of Peptide (Accession Number: NM\_001270). Purification method: Antigen affinity purified.

## Formulation

PBS with 0.02% sodium azide and 50% glycerol pH 7.3.

## Storage

Store at -20°C. DO NOT ALIQUOT

## Clonality

Polyclonal

## Ig Type

Rabbit IgG

## Applications

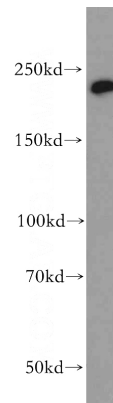
ELISA, WB, IHC, IP

## Dilutions

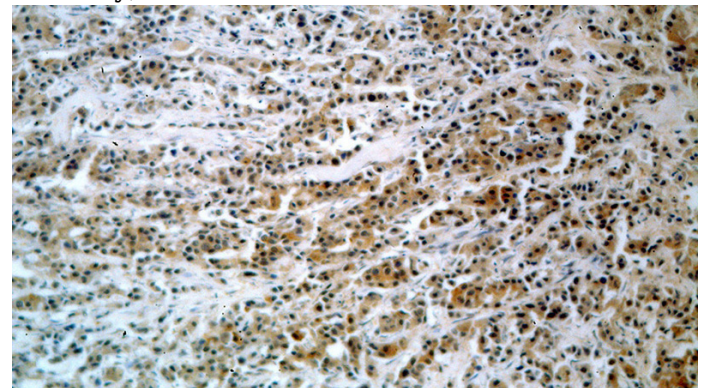
Recommended Dilution:

WB: 1:500-1:5000

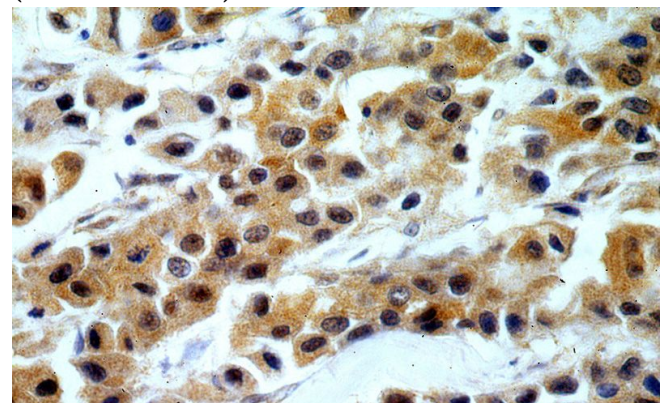
## Validations



HeLa cells were subjected to SDS PAGE followed by western blot with Catalog No:109217(CHD1 antibody) at dilution of 1:500



Immunohistochemical of paraffin-embedded human breast cancer using Catalog No:109217(CHD1 antibody) at dilution of 1:100 (under 10x lens)



Immunohistochemical of paraffin-embedded

# CHD1 antibody

Catalog Number: 109217

---

human breast cancer using Catalog  
No:109217(CHD1 antibody) at dilution of 1:100

IP Result of anti-CHD1 (IP:Catalog No:109217,  
4ug; Detection:Catalog No:109217 1:300) with  
HeLa cells lysate 1600ug.

