

KDM7A Polyclonal Antibody



Catalog Number: 162217

Product name

KDM7A Polyclonal Antibody

Specificity

Human

Antibody description

Polyclonal antibody to KDM7A

Preparation

Antigen: Recombinant fusion protein containing a sequence corresponding to amino acids 417-735 of mouse KDM7A (NP_001028602.2).

Formulation

PBS with 0.02% sodium azide, 50% glycerol, pH7.3.

Storage

Store at -20°C. Avoid freeze / thaw cycles.

Clonality

Polyclonal

Ig Type

Rabbit IgG

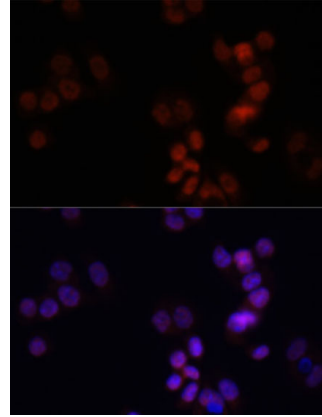
Applications

IF

Dilutions

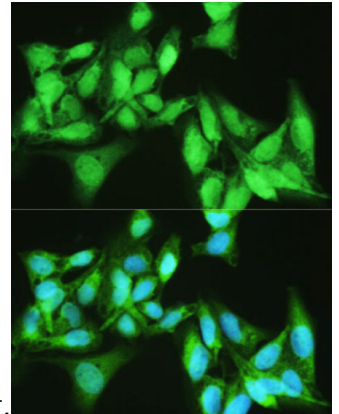
IF 1:50 - 1:200

Validations



Immunofluorescence - KDM7A Polyclonal Antibody

Immunofluorescence analysis of HCT116 cells using KDM7A antibody at dilution of 1:150. Blue:



DAPI for nuclear staining.

Immunofluorescence - KDM7A Polyclonal Antibody

Immunofluorescence analysis of U2OS cells using KDM7A antibody at dilution of 1:100. Blue: DAPI for nuclear staining.