

GRO alpha antibody

Catalog Number: 111217

Product name

GRO alpha antibody

Specificity

Human, Mouse; other species not tested.

Antibody description

GRO alpha Rabbit Polyclonal antibody. Positive WB detected in COLO 320 cells, mouse small intestine tissue. Positive IHC detected in human ovary tumor tissue. Observed molecular weight by Western-blot: 8 kDa

Preparation

This antibody was obtained by immunization of GRO alpha recombinant protein (Accession Number: NM_001511). Purification method: Antigen affinity purified.

Formulation

PBS with 0.1% sodium azide and 50% glycerol pH 7.3.

Storage

Store at -20°C. DO NOT ALIQUOT

Clonality

Polyclonal

Ig Type

Rabbit IgG

Applications

ELISA, WB, IHC

Dilutions

Recommended Dilution:

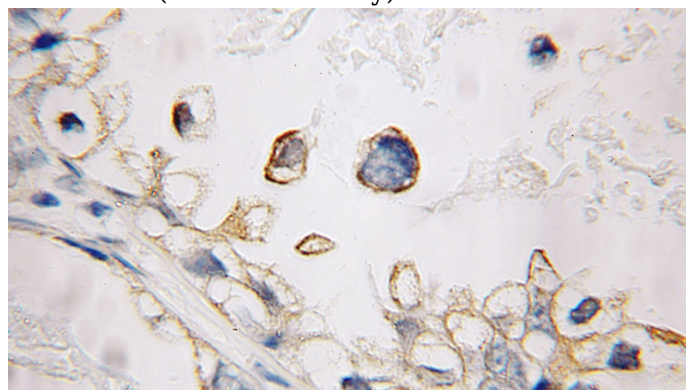
WB: 1:500-1:5000

IHC: 1:20-1:200

Validations



COLO 320 cells were subjected to SDS PAGE followed by western blot with Catalog No:111217(CXCL1 antibody) at dilution of 1:300



Immunohistochemical of paraffin-embedded human ovary tumor using Catalog No:111217(CXCL1 antibody) at dilution of 1:100 (under 10x lens)